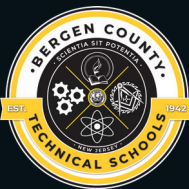
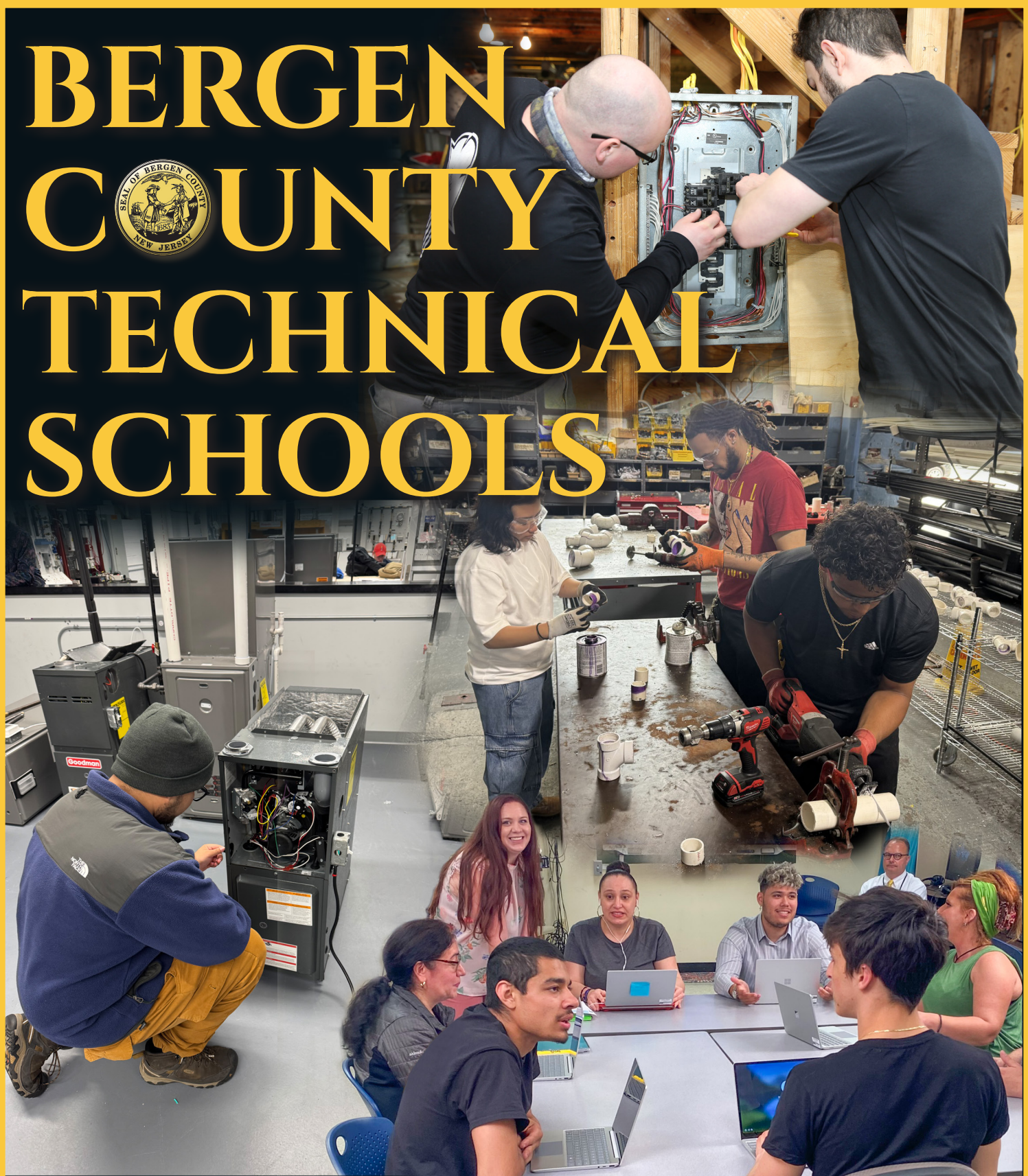


# BERGEN COUNTY TECHNICAL SCHOOLS



**Adult Education**  
**2025-2026 COURSES**

 [www.bergen.org/AdultEd](http://www.bergen.org/AdultEd)

201-343-6000 ext. 2289 (Evening)  
ext. 2288 (Day Classes)  
ext. 5503 (Day-Time Admissions)  
ext. 2308 (HSE[GED] Testing)

# Bergen County Technical Schools – Adult & Continuing Education

190 Hackensack Avenue, Hackensack, NJ 07601

Office Location: Adult Education Building

**Victor Lynch, Principal**

**Information, catalog requests and registration:  
Call 201-343-6000 ext. 2289 (evenings) or 2288 (days),  
5503 (Daytime Admissions Counselor)**

**Visit us online at [www.bergen.org/AdultEd](http://www.bergen.org/AdultEd)**

## CAMPUS LOCATIONS – Travel Directions

Check the back of the catalog for map and driving directions.

**Hackensack Campus (190 Hackensack Avenue, Hackensack):** Route 4 East to Hackensack Avenue South. Campus is located directly south of Route 4 on Hackensack Avenue, next to Boston Market.

**11 Carol Court:** Route 4 East to Hackensack Avenue South. Campus is located directly south of Route 4 on Hackensack Avenue, turn right into the parking lot just before the P.A.L. building.

**Teterboro Campus (504 Route 46 West & Central Avenue, Teterboro):** Route 46 toward Teterboro Airport. Campus is located directly across from airport on Route 46 West.

**Paramus Campus (275 Pascack Road, Paramus):** Ridgewood Avenue to Pascack Road. Campus is located on Pascack Road, directly across from Bergen New Bridge Medical Center.

## 2025-2026 EVENING SCHOOL CALENDAR

**APPRENTICES must make an appointment with Scott Demeter at [scodem@bergen.org](mailto:scodem@bergen.org) or call 201-343-6000 X 4603 BEFORE registering for EVERY class**

### SEPTEMBER 2025

- 1 Labor Day (Closed, NO CLASSES)
- 18 Evening Classes Cancelled at **Paramus and Teterboro Campus ONLY**
- 23-24 Rosh Hashanah (Closed, NO CLASSES)
- 25 Evening Classes Cancelled at **Hackensack Campus ONLY**

### OCTOBER 2025

- 2 Yom Kippur (Closed, NO CLASSES)
- 9 Evening Classes Cancelled at **Paramus Campus ONLY**
- 20 Diwali (Closed)

### NOVEMBER 2025

- 6-7 NJEA Convention (Closed, NO CLASSES)
- 13 Evening Classes Cancelled at **Paramus Campus ONLY**
- 26-29 Thanksgiving Recess (Closed, NO CLASSES)

### DECEMBER 2025

- 23-31 Recess (Closed, NO registration, NO CLASSES)

### JANUARY 2026

- 1-2 Winter Recess (Closed, NO CLASSES)
- 19 Martin Luther King, Jr. Birthday (Closed, NO CLASSES)

### FEBRUARY 2026

- 13 – 16 Presidents' Recess (Closed, NO CLASSES)

### MARCH 2026

- 20 Eid al-Fitr (Closed, NO CLASSES)
- 30-31 Spring Recess (Closed, NO CLASSES)

### APRIL 2026

- 1-3 Spring Recess (Closed, NO CLASSES)
- 18 Good Friday (Closed, NO CLASSES)

### MAY 2026

- 23-25 Memorial Day weekend (Closed, NO CLASSES)

### June 2026

- 19 Juneteenth (Closed, NO CLASSES)

\*If school closes due to inclement weather or emergencies, the administration will determine whether and when such days will be re-scheduled later in the school year.

**All registration  
is now online  
at [www.bergen.org/AdultEd](http://www.bergen.org/AdultEd)**

**NOTE:** Evening Division Students -

All weekday classes listed in this catalog are held in the evening hours.

All Saturday classes listed in this catalog are held in the morning hours.

# TABLE OF CONTENTS

Evening School Calendar . . . . .	Inside Front Cover
Mission/Vision Statement . . . . .	Page 2
Administration . . . . .	Page 32

## **CUSTOMIZED TRAINING SERVICES**

---

Customized Corporate Training . . . . .	Page 4
---	--------

## **EVENING SCHOOL COURSES**

---

Home Maintenance and Repair . . . . .	Page 4
Apprenticeship Training . . . . .	Pages 5-6
Plumbing . . . . .	Pages 7-8
Electrical Technology . . . . .	Pages 9-10
HVAC . . . . .	Pages 11-12
Carpentry . . . . .	Pages 13
Collision Repair . . . . .	Page 14
Home Inspection Program . . . . .	Page 15
Welding . . . . .	Page 16
Water & Wastewater Operation . . . . .	Page 16
Computer Training (PC) . . . . .	Page 17
Technical Computer Training . . . . .	Pages 18-19
CNC/Cisco Networking . . . . .	Page 20
Office 365 & Microsoft 365 Certification . . . . .	Pages 21
Firemen-Stationary Engineering . . . . .	Page 22
Lifestyle . . . . .	Page 23
Makerspace . . . . .	Page 24

## **EVENING SCHOOL GENERAL INFORMATION**

---

Evening School General Information . . . . .	Pages 25-26
Licensing Phone Numbers and Websites . . . . .	Page 26
Directions (MAP) . . . . .	Page 33

## **FULL-TIME DAY PROGRAM**

---

Advanced Manufacturing, Business Administration & Management (BAM) Hybrid, Electrician, Cosmetology (Hybrid), Heating, Air Conditioning, Ventilation and Refrigeration Maintenance Technology/Technician, Plumbing Technology/Plumber . . . . .	Pages 27-29
Admissions & General Information . . . . .	Pages 29-30
Full-Time Day Admissions Process Checklist . . . . .	Page 31

## **HSE/ESL PROGRAMS**

---

HSE (GED) HiSet Testing . . . . .	Page 32
-----------------------------------	---------

# MISSION STATEMENT

---

The Mission of the Bergen County Technical Schools Adult & Continuing Education Program is to provide county-based cost-efficient vocational and technical programs and services for post-secondary students. The actualization of this mission includes the following key components:

- Students will experience applied learning and teaching strategies utilizing appropriate and up-to-date specialized equipment and facilities.
- Programs will respond to regional economic needs and at minimum, permits graduates to pass national competency and licensure examinations.
- Students will be exposed to New Jersey Department of Education approved career-based educational programs and related work experiences and projects.
- Program goals are to provide for employment and/or continuing education after program completion.

Programs address the needs of general and special populations including disabled, gifted/talented, and at-risk post-secondary students through specific occupational programs.

# VISION STATEMENT

---

Bergen County Technical Schools Adult & Continuing Education Program provides our students with the skills, training and work habits needed to succeed in technical fields of employment, taking into account each student's unique skills, abilities and interests. We accomplish this through the implementation of currently accepted industry practices, while also keeping an open mind to new technologies, instructional methodologies and community needs.



**Howard Lerner, Ed.D.**  
*Superintendent*



**Victor Lynch**  
*Principal*

# BERGEN COUNTY TECHNICAL SCHOOLS ADULT & CONTINUING EDUCATION

Phone 201-343-6000

## **Principal**

Victor K. Lynch

## **Extension**

2274

## **Email Address**

viclyn@bergen.org

## **Evening Vocational School**

Kimberly Amaral

## **Extension**

2289

## **Email Address**

kimama@bergen.org

## **Apprentice Coordinator**

Scott Demeter

## **Extension**

4603

## **Email Address**

scodem@bergen.org

## **Daytime**

Tarla Broadnax

## **Extension**

2288

## **Email Address**

tarbro@bergen.org

Tracy Kirsch

2408

trakir@bergen.org

Shakeena Grice

2048

shagri@bergen.org

Anthony Mongilia

2047

antmon@bergen.org

## **Daytime Admissions**

Alexa Markel

## **Extension**

5503

## **Email Address**

alemar@bergen.org

## **Daytime Lead Teacher**

Nancy Joa, PhD.

## **Extension**

2280

## **Email Address**

nanjoa@bergen.org

## **HSE (GED) Testing**

Registration

## **Extension**

2308

## **Email Address**

---

Norma Chanona

3398

norcha@bergen.org

Carmen Sosa

2293

carsos@bergen.org

# APPRENTICESHIP PROGRAM

## What Is Apprenticeship?

Apprenticeship combines paid, on-the-job training (OJT) with classroom instruction known as Related Technical Instruction (RTI). Bergen County Technical Schools (BCTS) is an accredited RTI provider through the U.S. Department of Labor. Our programs—including Electrician, HVACR, and Plumbing—support registered apprentices working full- or part-time in their trade..

## How Can I Qualify?

You must be employed full- or part-time in a related trade. Your employer—or a licensed journey worker with a USDOL certificate—must be willing to sponsor you and register with the USDOL. You'll also need to complete 8,000 OJT hours and 576 classroom hours over four years. The Apprenticeship Coordinator will guide you through the registration process and help create a personalized plan.

## How Do I Become Certified?

To earn your U.S. Department of Labor Apprenticeship Completion Certificate, you must:

- Accumulate 8,000 OJT hours (typically 2,000/year)
- Complete 576 RTI hours (typically 144/year)
- Meet with Apprenticeship Coordinator each semester
- Keep all course completion certificates

OJT hours and RTI progress are tracked through the RAPIDS system by your sponsor.

**You must meet with the coordinator two months before program completion to begin the certification process.**

## How Do I Get a Trade License?

Once you've completed your apprenticeship, you may apply for a Trade License through the New Jersey Division of Consumer Affairs. Licensing applications and testing information can be found at:

- **Electrician:** <https://www.njconsumeraffairs.gov/elec> | Phone: 973-504-6410
- **Plumber:** <https://www.njconsumeraffairs.gov/plu> | Phone: 973-504-6420
- **HVACR:** <https://www.njconsumeraffairs.gov/hvacr> | Phone: 973-504-62500

## Important Program Information

- **Tuition:** \$1,400 per year (Spring registration is offered at a discounted rate for registered apprentices who have completed the fall class)
- **Additional Fees:** \$50 out-of-county fee and \$50 late registration fee
- **Financial Aid:** Not available, but VA benefits may apply
- **Start Dates, Times, and Locations:** Listed in the catalog

**Do not register online until your program is approved and personalized by the Apprenticeship coordinator.**

## Contact:

Scott Demeter, Apprenticeship Coordinator

Phone: 201-343-6000 ext. 4603

Email: [scodem@bergen.org](mailto:scodem@bergen.org)

Office: Room 105A

Hours: Monday–Friday, 8:00 AM–4:00 PM | Evenings hours listed online

## USDOL REPRESENTATIVES BY REGION

### Michael E. Blatt, New Jersey Sate Director

[blatt.michael.w@dol.gov](mailto:blatt.michael.w@dol.gov)

Office: 732-750-0766

### John Martinez

Union, Hudson, Middlesex, Monmouth, Ocean

[martinez.john@dol.gov](mailto:martinez.john@dol.gov)

### Huiching “Chris” Lee

Bergen, Essex, Hunterdon, Morris, Passaic, Sussex, Somerset, Warren

[lee.huiching@dol.gov](mailto:lee.huiching@dol.gov)

### Nicole Field

Atlantic, Burlington, Camden, Cape May, Cumberland, Gloucester, Salem

[field.nicole@dol.gov](mailto:field.nicole@dol.gov)

Course start dates, location, and nights are subject to change. Please check website for updates or call 201-343-6000, ext. 2289.

# HOME MAINTENANCE & REPAIR

Perfect for homeowners, new property managers, or anyone looking to tackle simple repairs themselves.

Course Title	Catalog Page
Basic Plumbing.....	page 7
Electrical House Wiring I.....	page 9
Electrical House Wiring II.....	page 9
Home Improvement & General Contracting I.....	page 13
Home Improvement & General Contracting II.....	page 13



# HOME INSPECTION TRAINING PROGRAM

This comprehensive, multi-module course prepares students to conduct full residential property inspections. Ideal for those pursuing state licensing or expanding real estate or contracting knowledge. To learn more, see page 15.

# CUSTOMIZED CORPORATE TRAINING PROGRAM



Image by Gerd Altmann from Pixabay

With over 50 years of experience in adult education, BCTS is a leading provider of customized training programs tailored to small businesses, corporations, and municipal organizations. From fully equipped, cutting-edge training facilities to expert instructors, BCTS delivers innovative workforce solutions designed to meet the unique needs of each organization.

to learn more about developing programs specific to your company needs, please call

Victor Lynch at 201-343-6000 ext. 2274 or by email [viclyn@bergen.org](mailto:viclyn@bergen.org)

Course start dates, location, and nights are subject to change. Please check website for updates or call 201-343-6000, ext. 2289.

## Electrician (144 hrs./yr.) 105

The program includes electrical theory and its applications to residential, commercial, and industrial fields. Recommended prerequisite: One year of high school algebra. (See Electrical Technology section of catalog for Electrical License preparation courses.)

<u>Fall</u>	<u>Spring</u>
Year 1: #600	#601
Year 2: #602	#603
Year 3: #630	#613
Year 4: #604	#605

See individual courses for start dates and times.

## Plumber (144 hrs./yr.) 108

The apprentice plumber learns to install, maintain, troubleshoot, and repair household and industrial plumbing systems. Topics of study include: job safety and health; pipes and pipe sizes; fittings and materials; basic hand tools; advanced tools and power machines; installation of pipe and proper supports; installation of plumbing fixtures and appliances; supply, drainage and venting; testing of plumbing systems; blueprint reading and isometric drawing; fireline installation and basic welding theory.

<u>Fall</u>	<u>Spring</u>
Year 1: #520	#521
Year 2: #522	#523
Year 3: #524	#525
Year 4: #526	#527

See individual courses for start dates and times.

## HVACR (144 hrs./yr.) 109

This apprenticeship program begins with courses in shop safety and the proper handling of the tools of the trade. Basic courses include instruction in fundamentals of plumbing and basic electrical theory. Each student will master the principles of refrigeration and the operations and servicing of all refrigeration equipment. Topics include: types of refrigerants and their uses; layout and design of components; motors, controls, switches, gauges, wiring, harnesses, valves, pumps, condensers, compressors, coils, and piping; rebuilding compressors; troubleshooting all equipment; reading and modifying mechanical and architectural blueprints, cost-estimating of labor and materials.

<u>Fall</u>	<u>Spring</u>
Year 1: #640	#641
Year 2: #642	#643
Year 3: #644	#645
Year 4: #646	#647

See apprenticeship coordinator regarding Year 3 and Year 4 courses.

See apprenticeship coordinator for individual course start dates and times.



Course start dates, location, and nights are subject to change. Please check website for updates or call 201-343-6000, ext. 2289.

# PLUMBING



## Basic Plumbing (60 hrs.) 515-A, 515-N

This course is ideal for homeowners interested in doing some plumbing repairs on their own or even individuals looking into plumbing as a profession. This course is designed to cover basic areas of residential plumbing repairs and maintenance. Subjects to be covered are faucet repair, faucet replacement, tub or shower repair, soldering copper tubing, gluing PVC pipe, and various joining techniques for repairing different materials. Also included are drain cleaning - i.e. snake out of sinks and tubs, and clearing toilet stoppages. Other areas of repair are hot water heaters, replacing toilet parts, steam and hot water boiler maintenance and minor repairs. Class is in the form of lecture, demonstration, and hands-on. Required are a tape measure, work gloves, leather shoes or boots, and safety glasses.

Course #	Start	Days	Hours	Location	Cost
515-A	Oct. 7	T & Th	6:00-9:00	190 Hackensack Ave. Plumbing Shop	\$700
515-N	Feb. 23	T & Th	6:00-9:00	190 Hackensack Ave. Plumbing Shop	\$700

Ray Krenc: raykre@bergen.org

## Introduction to Plumbing (78 hrs.) 520-A (Fall Semester Only)

This course provides a foundation for the Plumbing Apprenticeship Related Training Program. This course provides an introduction to the basic principles of the plumbing trade. Topics include safety, terms, definitions, theory, troubleshooting, tools, equipment, materials, OSHA regulations and information, first aid, and introduction to Plumbing Code.

Course #	Start	Days	Hours	Location	Cost
520-A	Sept. 29	M & W	6:00-9:00	Hackensack Room 47	\$900

Frank Bocchino: fraboc@bergen.org

## Plumbing Skills, Techniques and Fundamentals (78 hrs.) 521-N (Spring Semester Only)

This course provides the theory, techniques, and fundamentals of plumbing. Topics include pipe sizing, calculations, layout, connection and installation of water lines, and materials standards.

Course #	Start	Days	Hours	Location	Cost
521-N	Feb. 9	M & W	6:00-9:00	Hackensack Room 44	\$900

Frank Bocchino: fraboc@bergen.org

## Installation & Maintenance of Fixtures, Appliance & Equipment of Plumbing Systems (78 hrs.) 522-A (Fall Semester Only)

This course provides a review of plumbing code requirements, layout, joints and connections by code, design, and the maintenance of plumbing equipment and systems. Traps and bathroom layouts will be reviewed. Lecture will be used to expose the student to the theory and knowledge needed for plumbing installation and maintenance.

Course #	Start	Days	Hours	Location	Cost
522-A	Sept. 29	M & W	6:00-9:00	Hackensack Room 45	\$900

Mark Bocchino: marboc@bergen.org

## Technical Math for Plumbing (78 hrs.) 523-N (Spring Semester Only)

This course teaches basic math, algebra, geometry, mathematical formulas, measurements, calculations, equations, and site levels used in the plumbing trade.

Course #	Start	Days	Hours	Location	Cost
523-N	Feb. 9	M & W	6:00-9:00	Hackensack Room 45	\$900

Mark Bocchino: marboc@bergen.org

Course start dates, location, and nights are subject to change. Please check website for updates or call 201-343-6000, ext. 2289.

**Water Sizing & Gas Sizing (78 hrs.)  
524-A (Fall Semester Only)**

This course will develop the theory and skills needed to properly size water, gas, and css gas piping services. Topics will include building requirements, fixture and equipment needs, calculations for water fixture units, and blueprints and sizing. Test requirements for code approval will be stressed along with the effects of improper water pressure.

Course #	Start	Days	Hours	Location	Cost
524-A	Sept. 29	M & W	6:00-9:00	200 Hackensack Ave. Room 48	\$900

**Blueprint Reading, Estimating and Drawings for Plumbers (78 hrs.)  
525-N (Spring Semester Only)**

Interpretation, development, and evaluation of blueprints and drawings, estimation of materials and labor using approximate and detail methods. Architectural symbols needed to read and understand blueprints will be reviewed during class.

Course #	Start	Days	Hours	Location	Cost
525-N	Feb. 9	M & W	6:00-9:00	200 Hackensack Ave. Room 42	\$900

**National Standard Plumbing Code and Fuel Gas Code #1 (Licensing Prep Included) (78 hrs.)  
526-A (Fall Semester Only)**

This course offers comprehensive instruction in the theory, maintenance, installation, wiring, and troubleshooting of heating and hot water systems—including steam and hydronic systems. Emphasis is placed on interpreting and applying the National Standard Plumbing Code and Fuel Gas Code. Licensing exam preparation is embedded to support students pursuing the NJ Master Plumber’s License.

Course #	Start	Days	Hours	Location	Cost
526-A	Sept. 29	M & W	6:00-9:00	200 Hackensack Ave. Room 42	\$900

Tony Citarella: [toncit@bergen.org](mailto:toncit@bergen.org)

**National Standard Plumbing Code and Fuel Gas Code #2 (Licensing Prep Included) (78 hrs.)  
527-N (Spring Semester Only)**

This course covers the design, sizing, and installation of drainage and vent (DWV) systems in accordance with the National Standard Plumbing Code and Fuel Gas Code. Topics include system layout, code compliance, and pump servicing. Integrated licensing prep helps students prepare for the NJ Master Plumber’s License exam.

Course #	Start	Days	Hours	Location	Cost
527-N	Feb. 9	M & W	6:00-9:00	200 Hackensack Ave. Room 48	\$900

Tony Citarella: [toncit@bergen.org](mailto:toncit@bergen.org)

**NJ Master License Preparation for Plumbers (27 hrs.)  
517-A, 517-N**

This course prepares recognized plumbing journeypersons to sit for the New Jersey Master Plumber’s Licensing Examination. Review covers all areas encompassed by the examination. Topics include plumbing applications, mathematics fundamental to plumbing, National Standard Plumbing Code, business law (as related to the trade), and human relations. State eligibility requirements: an applicant must be 21 years of age and must have five years of experience in the plumbing industry, three of which must be as a journeyperson.

Course #	Start	Days	Hours	Location	Cost
517-A	Sept. 29	M & W	6:00-9:00	200 Hackensack Ave. Room 43	\$325
517-N	Feb. 9	M & W	6:00-9:00	200 Hackensack Ave. Room 43	\$325

Tony Citarella: [toncit@bergen.org](mailto:toncit@bergen.org)

Mark Bucchino: [marboc@bergen.org](mailto:marboc@bergen.org)

**Approved NJ Plumbing License Renewal (5 hrs.)  
519-Q, 519-R, 519-S**

The State of New Jersey mandates this course for all Plumbing License Renewal. Topics include business law, OSHA, code updates and ADA requirements. State licensed instructors teach the class. **(Prerequisite:** Students must bring their own copy of the current N.S.P.C. Rules and Regulations of the Board of Master Plumbers, photo ID, and current Plumbing license number.)

Course #	Start	Days	Hours	Location	Cost
519-Q	Feb. 21	Saturday	8:00-2:00	190 Hackensack Ave. Adult Ed. Bldg.	\$140
519-R	Mar. 14	Saturday	8:00-2:00	190 Hackensack Ave. Adult Ed. Bldg.	\$140
519-S	Apr. 18	Saturday	8:00-2:00	190 Hackensack Ave. Adult Ed. Bldg.	\$140

Tony Citarella: [toncit@bergen.org](mailto:toncit@bergen.org)



Course start dates, location, and nights are subject to change. Please check website for updates or call 201-343-6000, ext. 2289.

# ELECTRICAL TECHNOLOGY

This series of courses is designed for apprentices and electricians and can lead to the New Jersey State Electrical License. The courses cover all the required areas needed for the completion of the apprenticeship or the license exam. The theory and lab equipment are state-of-the-art. Topics include: electrical circuits, motors, motor controls, programmable controllers, fire alarms, security systems and license preparation.

## Electrical House Wiring I (78 hrs.) 606-A, 606-N

Great For Homeowners!

Basic electrical circuits used in the home are covered, including service installation, conduit wiring, BX and Romex wiring, and single pole switches for lamps and outlets. The class is taught in accordance with the National Electrical Code. Topics include: connection of three or more outlets on the same circuit, circuit designs, wiring safety, alternate methods of wiring and estimating.

Course #	Start	Days	Hours	Location	Cost
606-A	Sept. 29	M & W	6:00-9:00	190 Hackensack Ave. Electrical Shop	\$875
606-N	Feb. 9	M & W	6:00-9:00	190 Hackensack Ave. Electrical Shop	\$875

Dave Tarallo: davtar@bergen.org

## Electrical House Wiring II (78 hrs.) 615-A, 615-N

Great For Homeowners!

This course covers residential wiring in new and old construction. Topics covered are switches and outlets, boxes and connections, outdoor wiring, 200 Amp services, code requirements, 240 volt circuits, ceiling fans, attic fans, thermostats, swimming pools and hot tub code requirements and residential telephone, surround sound and cable TV wiring.

Course #	Start	Days	Hours	Location	Cost
615-A	Sept. 29	M & W	6:00-9:00	190 Hackensack Ave. Electrical Shop	\$875
615-N	Feb. 9	M & W	6:00-9:00	190 Hackensack Ave. Electrical Shop	\$875

Dave Tarallo: davtar@bergen.org

## Electrical Circuits I (78 hrs.) 600-A, 600-N

This course provides an introduction to voltage, current and resistance. Application of Ohm's Law, Watt's Law, and Kirchoff's Law to series, parallel and series-parallel combination circuits are covered. In addition, the factors affecting conductor resistance and current-carrying ability are reviewed. Other topics include application of magnetism, electromagnetics, and sources of voltage and mathematical instruction as needed.

Course #	Start	Days	Hours	Location	Cost
600-A	Sept. 30	T & Th	6:00-9:00	190 Hackensack Ave. Electrical Shop	\$900
600-N	Feb. 10	T & Th	6:00-9:00	190 Hackensack Ave. Electrical Shop	\$900

Dave Tarallo: davtar@bergen.org

## Electrical Circuits II (78 hrs.) 601-A, 601-N

This course provides an introduction to the components of alternating current and circuits. Single-phase, series and parallel, RL, RC and RLC circuits are examined and power factor determinations are made. Three-phase circuits including transformers are considered, as well as the concept of admittance, conductance, and susceptance. Other topics include the meters used in AC measurements, as well as resonance in series and parallel circuits. **(Prerequisite:** Course #600 or equivalent.)

Course #	Start	Days	Hours	Location	Cost
601-A	Sept. 30	T & Th	6:00-9:00	190 Hackensack Ave. Electrical Shop	\$900
601-N	Feb. 10	T & Th	6:00-9:00	190 Hackensack Ave. Electrical Shop	\$900

## Motors, Generators, Transformers and the NEC (78 hrs.) 602-A, 602-N

Basic design and operation of transformers, DC/AC motors and generators are reviewed. Topics include shunt, series DC motors and squirrel cage, synchronous AC motors, three phase and single phase. The requirements of the National Electric Code (NEC) are presented for the installation of transformers and motors. **(Prerequisite:** Course #601 or equivalent.)

Course #	Start	Days	Hours	Location	Cost
602-A	Sept. 29	M & W	6:00-9:00	190 Hackensack Ave. Electrical Shop	\$900
602-N	Feb. 9	M & W	6:00-9:00	190 Hackensack Ave. Electrical Shop	\$900

Dan DeSena: dandes@bergen.org

## Motors and Generator Control Circuits (78 hrs.) 603-A, 603-N

This class covers various control devices used in motor and generator control circuits for speed, direction, starting and stopping. Basic relay LOGIC diagrams and troubleshooting are stressed. PLC controllers are introduced. **(Prerequisite:** Course #602 or equivalent.)

Course #	Start	Days	Hours	Location	Cost
603-A	Sept. 29	M & W	6:00-9:00	190 Hackensack Ave. Electrical Shop	\$900
603-N	Feb. 9	M & W	6:00-9:00	190 Hackensack Ave. Electrical Shop	\$900

Rob Piotrowski: robpio@bergen.org

Course start dates, location, and nights are subject to change. Please check website for updates or call 201-343-6000, ext. 2289.

## Electrical Math and the National Electrical Code 630-A, 631-N

These modular courses support both apprentices and licensed electricians seeking continuing education. Offered in two parts—basic and advanced—they strengthen math skills and NEC book usage. Students may take the full course or select specific modules to target key areas.

### Basic (78 hrs.) 630-A (Fall Semester Only)

The basic course will review and strengthen your knowledge of Ohms Law and Watts Law as well as Series Circuit, Parallel Circuit Combination Circuit and Voltage Drop math calculations. It will then cover some of the many codes and tables used in our industry such as box fill, conductor sizing and protection, pipe sizing and residential service entrance calculations.

Course #	Start	Days	Hours	Location	Cost
630-A	Sept. 29	M & W	6:00-9:00	190 Hackensack Ave. Electrical Shop	\$900

Eddy Nina: eddnin@bergen.org

### Advanced (78 hrs.) 631-N (Spring Semester Only)

The advanced course will review mathematical calculations and formulas for Inductive, Capacitive, and RLC circuits. Designed to strengthen student's knowledge and use of AC formulas in series, parallel and combination circuits. It will then cover more of the codes and tables in the NEC for Multifamily and commercial service entrance calculations, Motor circuits and protection, pipe sizing and selection and transformer calculations.

Course #	Start	Days	Hours	Location	Cost
631-N	Feb. 9	M & W	6:00-9:00	190 Hackensack Ave. Electrical Shop	\$900

Eddy Nina: eddnin@bergen.org

### Electrical License Preparation I (78 hrs.) 604-A (Fall Semester Only)

This course prepares the student to sit for the New Jersey State Electrical License Examination. The course consists of an in-depth study of the latest edition of the National Electrical Code. Basic electrical fundamentals and calculations required for the licensure examination are reviewed in addition to the expanded fire alarm and business sections of the test. Fall and spring courses, #604 and #605 are necessary for comprehensive examination preparation.

Course #	Start	Days	Hours	Location	Cost
604-A	Sept. 29	M & W	6:00-9:00	190 Hackensack Ave. Electrical Shop	\$900

Rich Heimbuch: richei@bergen.org

### Electrical License Preparation II (78 hrs.) 605-N (Spring Semester Only)

This course prepares the student to sit for the New Jersey State Electrical License Examination. Basic electrical fundamentals are reviewed as well as an in-depth study of the calculations required by the examination. The class also includes a review of the National Electrical Code, expanded fire alarm, and business sections of the test. Depending on the electrician's proficiency, this course can be taken on its own or following License Preparation I. Both courses are recommended for comprehensive examination preparation.

Course #	Start	Days	Hours	Location	Cost
605-N	Feb. 9	M & W	6:00-9:00	190 Hackensack Ave. Electrical Shop	\$900

Rich Heimbuch: richei@bergen.org

## Programmable Controllers (PLC I) (78 hrs.) 608-A, 608-N

This hands-on course offers a comprehensive look at and use of programmable logic controllers, designing and programming automation control circuits to bring numerous projects to life. Students will learn the use of Graphic User Interface software to design, configure, download and upload working programs to live programmable logic controllers. **(Prerequisite:** Course #603 or equivalent and strong background in relay logic recommended.)

**ENROLLMENT IS LIMITED.**

Course #	Start	Days	Hours	Location	Cost
608-A	Sept. 30	T & Th	6:00-9:00	190 Hackensack Ave. Electrical Shop	\$900
608-N	Feb. 10	T & Th	6:00-9:00	190 Hackensack Ave. Electrical Shop	\$900

Eddy Nina: eddnin@bergen.org

## Fire Alarm, Security Systems and Estimating (78 hrs.) 613 -A, 613-N

This class emphasizes heat detectors and horn/strobe annunciators using state of the art control panels, PIRs ionization and photocell smoke detectors. Topics include: Class A and Class B type installations, NFPA and NEC codes, multi-zone systems, annunciation, central station options, introduction to fiber optics, light signals transmission and receiving. Estimating topics will include the cost of labor, equipment, overhead and profit.

Course #	Start	Days	Hours	Location	Cost
613-A	Sept. 30	T & Th	6:00-9:00	190 Hackensack Ave. Electrical Shop	\$900
613-N	Feb. 10	T & Th	6:00-9:00	190 Hackensack Ave. Electrical Shop	\$900

Rich Heimbuch: richei@bergen.org

## N.J. Electrical License Renewal (34 hrs.) 632-A, 632-N

New Jersey mandates the Electrical License Renewal with 34 hours of continuing education. This includes 9 hours of code and 1 hour of New Jersey Laws, Rules and Regulations plus 24 elective continuing education credits. This must be done by March 31st every 3 years.

Course #	Start	Days	Hours	Location	Cost
632-A	Oct. 14	T & Th	6:00-9:00	Hackensack	\$350
632-N	Jan. 20	T & Th	6:00-9:00	Hackensack	\$350

Dan DeSena: dandes@bergen.org



Course start dates, location, and nights are subject to change. Please check website for updates or call 201-343-6000, ext. 2289.

# HVACR

This series of courses is designed for apprentices and can lead to the New Jersey State HVACR License. The courses cover all the required areas needed for the completion of the apprenticeship or the license exam. Classes will be in the form of lecture, in-shop demonstrations and power point slides that highlight key concepts of the HVACR Apprenticeship Program.

For current licensing requirements, contact the State Board of Heating, Ventilating, Air Conditioning & Refrigeration (HVACR) Contractors at 973-504-6250 or visit their website at <http://www.njconsumeraffairs.gov/hvacr/>.

**Course locations and nights are subject to change. See apprenticeship coordinator for start dates and nights.**

## Introduction to HVACR (78 hrs.) 640-A (Fall Semester Only)

This course contains an overview of the domestic, commercial and industrial refrigeration and air conditioning field. Introduction to systems and major components, basic electricity, thermodynamics and the basic refrigeration cycle will be heavily stressed and reviewed as well as basic tools and instruments used by the technician. Learning objectives include the many diverse careers in the HVACR field.

Course #	Start	Days	Hours	Location	Cost
640-A	Sept. 30	T & Th	6:00-9:00	Hackensack 11 Carol Court	\$900

## Fundamentals of Basic Electrical Theory (78 hrs.) 641-N (Spring Semester Only)

This course covers instruction in the fundamentals of basic electrical theory. The student will master the principles of refrigeration as well as the operations and servicing of all refrigeration equipment. Topics will include types of refrigerants and their uses, layout and design of components, motor controls, switches, gauges, wiring, harnesses, valves, pumps, condensers and trouble shooting. This course will prepare students for an EPA approved A/C Certification Test. **Upon completion of Course 102-N, a proctored certified examination (Type I, II, II and Universal) will be given. The student must have an 80% pass rate to become certified.**

Course #	Start	Days	Hours	Location	Cost
641-N	Feb. 10	T & Th	6:00-9:00	Hackensack 11 Carol Court	\$900

## Domestic, Commercial and Industrial Refrigeration and Air Conditioning Systems (78 hrs.) 642-A (Fall Semester Only)

The second year of the apprenticeship program includes a more in-depth view of domestic, commercial and industrial refrigeration and air conditioning systems. Topics are revisited with additional emphasis on application which is to coincide with the student's increasing work experience in the field. The aim is to build upon the classroom objectives that the student has covered in this program, to date.

Course #	Start	Days	Hours	Location	Cost
642-A	Sept. 30	T & Th	6:00-9:00	Hackensack 11 Carol Court	\$900

## Trouble Shooting of Systems (78 hrs.) 643-N (Spring Semester Only)

This capstone course of the apprenticeship program will prepare the student for in-depth work in the commercial and residential HVACR field. Topics that will be covered are: Heating, Electrical, Motors, Trouble shooting, Control systems, Evacuation and charging procedures, Metering devices, Condensers, Refrigeration lubrication and Compressors. Heavy emphasis will be on trouble shooting of systems. Learning objectives include the many diverse careers in the HVACR field.

Course #	Start	Days	Hours	Location	Cost
643-N	Feb. 10	T & Th	6:00-9:00	Hackensack 11 Carol Court	\$900



Course start dates, location, and nights are subject to change. Please check website for updates or call 201-343-6000, ext. 2289.

**Commercial Industrial HVACR Application & Trouble Shooting (78 hrs.)**  
**644-A (Fall Semester Only)**

A continuation of the solid skills development and strong theoretical knowledge covering increasingly advanced concepts in the field. Coverage ranges from the troubleshooting of systems and components to concepts of fluid handling systems, cooling towers, and indoor air quality. With a building block approach that ensures readers comprehend simpler concepts before moving on to more complex information.

Course #	Start	Days	Hours	Location	Cost
644-A	Sept. 29	M & W	6:00-9:00	Hackensack 11 Carol Court	\$900

Louis Leichtweisz: loulei@bergen.org

**Advance Trouble Shooting and Problem Solving for Commercial HVAC (78 hrs.)**  
**645-N (Spring Semester Only)**

This course covers more in-depth overview and instruction for the commercial HVAC industry. It will acclimate the student to troubleshooting and problem solving skills. Topics will include system start up, cause and effect, benefits of scheduled maintenance, water treatment, and IAQ (Indoor Air Quality). Equipment covered will be cooling towers, evaporative condensers, centrifugal and screw compressors. Learning objective will be to familiarize the student with the commercial industry.

Course #	Start	Days	Hours	Location	Cost
645-N	Feb. 9	M & W	6:00-9:00	Hackensack 11 Carol Court	\$900

Louis Leichtweisz: loulei@bergen.org

**Air Cooled Heat-Pump Systems, Operation and Service (78 hrs.)**  
**646-A (Fall Semester Only)**

This course details the heat pump reversing cycle as compared to a conventional refrigeration cycle and the duties of the outdoor coil versus the indoor coil. It will also cover heat pump components, piping, defrost control, and electrical devices such as heat pump thermostats, motors, compressors, and types of capacity control as well as heat-pump wiring diagrams. Included will be Air Source Heat-Pumps ( ASHP ) installation, troubleshooting, and scheduled maintenance.

Course #	Start	Days	Hours	Location	Cost
646-A	Sept. 30	M & W	6:00-9:00	Hackensack 11 Carol Court	\$900

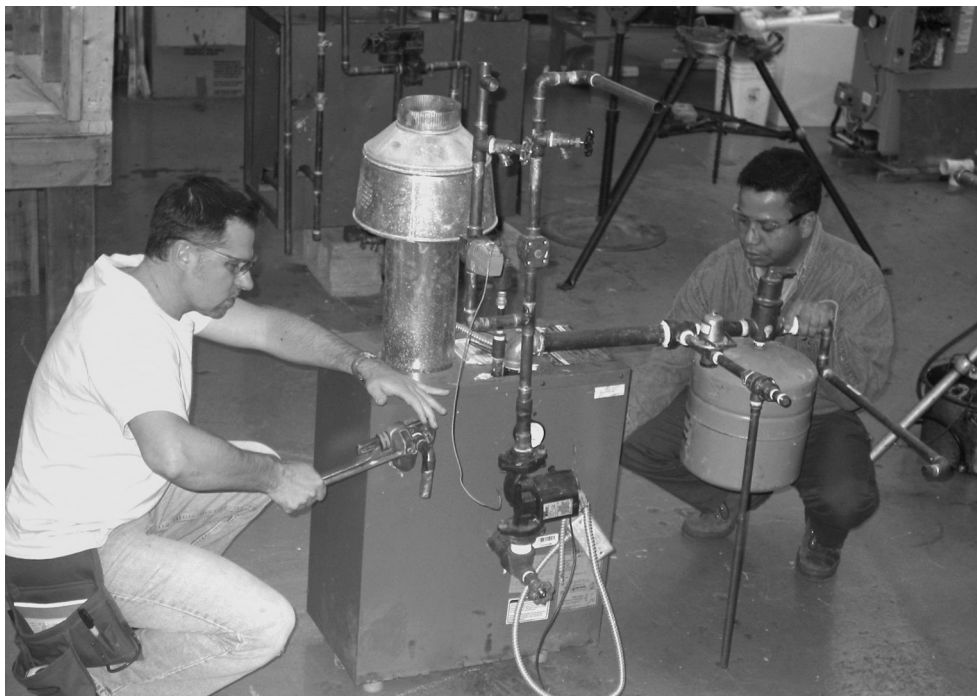
Louis Leichtweisz: loulei@bergen.org

**Geothermal and Water Cooled Heat-Pumps with Systems Sizing and Design (78 hrs.)**  
**647-N (Spring Semester Only)**

This course goes into detail of Water Source Heat Pumps ( WSHP ) and geothermal heat pumps including installation types, sequence of operation, troubleshooting, and scheduled maintenance. Types of system piping configuration will be discussed incorporating open and closed loop heat pump systems as well as system sizing and design, energy efficient calculations such as Energy Efficient Ratio (EER) and Season Energy Efficient Ratio (SEER).

Course #	Start	Days	Hours	Location	Cost
647-N	Feb. 9	M & W	6:00-9:00	Hackensack 11 Carol Court	\$900

Louis Leichtweisz: loulei@bergen.org



Course start dates, location, and nights, are subject to change. Please check website for updates or call 201-343-6000, ext. 2289.

# CARPENTRY

Course locations and nights are subject to change.

## Blueprint Reading, Estimating, and Construction Math (72 hrs.) 500-A, 500-N

This course will culminate on the practical application of mathematical calculations gained by using an architects scale or engineers scale in finding area, volume, mass and materials needed. All of the basic calculations and equations that are needed will be covered as well as measurement systems and techniques as foundation for the Site Layout and Measurement course.

Course #	Start	Days	Hours	Location	Cost
500-A	Oct. 6	M & T	6:00-9:00	Paramus Carpentry Shop	\$800
500-N	Feb. 10	M & T	6:00-9:00	Paramus Carpentry Shop	\$800

Kevin Rager: kevrag@bergen.org

## Site Layout and Surveying (72 hrs.) 562-A, 562-N

This course will focus on the application of surveying and engineering instruments in layout of foundations and overall building construction. The core tools will be a builders level, transit, theodolite and total station, as well as more modern laser equipment.

Course #	Start	Days	Hours	Location	Cost
562-A	Oct. 6	M & T	6:00-9:00	Paramus Carpentry Shop	\$800
562-N	Feb. 2	M & T	6:00-9:00	Paramus Carpentry Shop	\$800

Kevin Rager: kevrag@bergen.org

## Concrete and Masonry: Block, Brick, Stone and Veneer (72 hrs.) 505-A (Fall Semester Only)

This course will go through formwork for foundations, footings and flatworks forms, as well as brick, block and stone in architectural decoration, and functional applications.

Course #	Start	Days	Hours	Location	Cost
505-A	Oct. 7	T & Th	6:00-9:00	Paramus Carpentry Shop	\$800

## Deck/Porch Building (72 hrs.) 572-N (Spring Semester Only)

Students enrolling in this course will learn the skills necessary to design and construct a code-compliant deck for a residential application. Students will learn how to prepare the foundation for the deck supports, as well as how to use span tables to size joists properly and how to connect the deck structure to the house. Special emphasis will be placed on guard rail and handrail attachments, bracing and flashing. Simple stair-building will also be covered.

Course #	Start	Days	Hours	Location	Cost
572-N	Feb. 3	T & Th	6:00-9:00	Paramus Carpentry Shop	\$825

## Home Improvement & General Contracting I (72 hrs.) 574-A, 574-N

A comprehensive house building course that through a hands-on approach covers a wide variety of building skills and techniques. This course will take students through many of the steps of house construction & home maintenance. This course will include the following:

- Introduction to general tool safety and knowledge
- How to frame sub-floors and walls
- Install interior and exterior doors, and windows
- Install and repair of Sheetrock and spackle
- Install laminate flooring
- May include some demolition work

This course is designed to give novice construction enthusiasts the skills they need to tackle home improvement projects or begin a career in the construction field. **ENROLLMENT IS LIMITED TO 12 STUDENTS.**

Course #	Start	Days	Hours	Location	Cost
574-A	Oct. 7	T & Th	6:00-9:00	Paramus Carpentry Shop	\$995
574-N	Feb. 3	T & Th	6:00-9:00	Paramus Carpentry Shop	\$995

Brad Bartone: brabar@bergen.org

Tom Jodice: thojod@bergen.org

Clayton Ricker: claric@bergen.org

## Home Improvement & General Contracting II (72 hrs.) 575-A, 575-N

A continuation of Home Improvement & General Contracting 1.

This course will include the following:

- Introduction to general tool safety and knowledge
- Install kitchen cabinets, countertops and backsplash
- Install and replace bathroom fixtures
- Install ceramic tile floors
- Custom moulding and trim work
- May include some demolition work

This course is designed to give novice construction enthusiasts the skills they need to tackle home improvement projects or begin a career in the construction field. **ENROLLMENT IS LIMITED TO 12 STUDENTS.**

Course #	Start	Days	Hours	Location	Cost
575-A	Oct. 6	M & W	6:00-9:00	Paramus Carpentry Shop	\$995
575-N	Feb. 2	M & W	6:00-9:00	Paramus Carpentry Shop	\$995

Brad Bartone: brabar@bergen.org

Tom Jodice: thojod@bergen.org

Clayton Ricker: claric@bergen.org



Course start dates, location, and nights are subject to change. Please check website for updates or call 201-343-6000, ext. 2289.

# COLLISION REPAIR

This series of courses is designed for the entry level, apprentice, and "C" level technician, and can lead to employment in the collision repair industry, as well as one or more ASE certifications based upon the individuals desire to study and sit for the examinations. The course covers all the required areas needed for the preparation for ASE exams. The theory and lab equipment are state-of-the-art. Topics include: welding, paint/refinish, structural/non-structural repair and estimating. Program graduates will be qualified to accept positions as entry-level technicians in the collision repair industry.

**Course locations and nights are subject to change.**

## Introduction to Collision Repair (42 hrs.) 150-A (Fall Semester Only)

This is an introductory course that teaches students the basic skills in the collision repair field, and serves as a foundation for all subsequent areas of studies. The principles learned in this course will familiarize the student with the field, helping the student to assess if this is the career he or she desires to pursue.

Course #	Start	Days	Hours	Location	Cost
150-A	Sept. 29	M & W	6:00-9:15	Paramus	\$525

Louis May: [loumay@bergen.org](mailto:loumay@bergen.org)

## Non-Structural Analysis and Damage Repair (42 hrs.)

### 151-A (Fall Semester Only)

The principles learned in this course will prepare the student to accomplish the essential tasks of analyzing, preparing, and performing damage repair through adjustments or replacement of parts. These tasks are essential to those aspiring to work in the auto body repair profession.

Course #	Start	Days	Hours	Location	Cost
151-A	Nov. 24	M & W	6:00-9:15	Paramus	\$525

Louis May: [loumay@bergen.org](mailto:loumay@bergen.org)



## Auto Body Welding Principles and Techniques (42 hrs.)

### 153-N (Spring Semester Only)

This course will enable the student to be acquainted with the basic skills in auto body welding. An emphasis is placed on safety, protective clothing, tools, and equipment procedures and techniques of MIG welding. The principles learned in this course will allow the student to be familiar with the welding aspects of auto collision repair. As welding is a major function of auto repair, this course will better prepare the student to enter a career in auto body repair.

Course #	Start	Days	Hours	Location	Cost
153-N	Jan. 28	M & W	6:00-9:15	Paramus	\$525

Louis May: [loumay@bergen.org](mailto:loumay@bergen.org)

## Paint Damage Analysis (42 hrs.)

### 154-N (Spring Semester Only)

The student will analyze the types of damage caused by weather, chemicals, or collision, and calculate the refinish time involved. The student will also be involved in the preparation of the substrate as well as the application of the topcoat. Topics for discussion will be the special effects and the process to refinish composite and flexible parts. A portion of the theory will expose the student to some aspects of shop and material management.

Course #	Start	Days	Hours	Location	Cost
154-N	March 23	M & W	6:00-9:15	Paramus	\$525

Louis May: [loumay@bergen.org](mailto:loumay@bergen.org)

## Plastics and Adhesives (15 hrs.)

### 152-N (Spring Semester Only)

This course will enable the student to repair auto bodies using plastics and adhesives. This course will also enable the student to perform safely when mixing and handling chemicals. The principles learned in this course will allow the student to understand and utilize the techniques and methods necessary to repair auto bodies with plastics and adhesives. These techniques and methods are essential for those aspiring to work in the auto body repair profession.

Course #	Start	Days	Hours	Location	Cost
152-N	May 18	M & W	6:00-9:15	Paramus	\$350

Louis May: [loumay@bergen.org](mailto:loumay@bergen.org)

Course start dates, location, and nights are subject to change. Please check website for updates or call 201-343-6000, ext. 2289.

# HOME INSPECTION

Certificate Program: 10 MODULES

The program is in partnership with the New Jersey Department of Law and Public Safety, Division of Consumer Affairs, State Board of Professional Engineers and Land Surveyors, Home Inspection Advisory Committee and approved by the New Jersey Department of Education. The program is required as a prerequisite for licensing as a New Jersey Home Inspector. **Attendance is mandatory. Maximum Enrollment is Limited to 15 Students. Students must register PRIOR to start date of each module.**

Course locations and nights are subject to change.

## EXTERIOR INSPECTION (15 hrs.)

Course #	Start	Days	Hours	Location	Cost
908-A	Sept. 30	T, W,Th	6:00-9:00	190 Hackensack Ave. Room 120	\$350

## ROOFING INSPECTION (15 hrs.)

Course #	Start	Days	Hours	Location	Cost
901-A	Oct. 15	T, W,Th	6:00-9:00	190 Hackensack Ave. Room 120	\$350

## STRUCTURAL INSPECTION (15 hrs.)

Course #	Start	Days	Hours	Location	Cost
902-A	Oct. 29	T, W,Th	6:00-9:00	190 Hackensack Ave. Room 120	\$350

## INTERIOR INSPECTION (12 hrs.)

Course #	Start	Days	Hours	Location	Cost
909-A	Nov. 13	T, W,Th	6:00-9:00	190 Hackensack Ave. Room 120	\$350

## INSULATION & VENTILATING INSPECTION (12 hrs.)

Course #	Start	Days	Hours	Location	Cost
904-N	Dec.2	T, W,Th	6:00-9:00	190 Hackensack Ave. Room 120	\$350

## FIREPLACE & CHIMNEY INSPECTION (12 hrs.)

Course #	Start	Days	Hours	Location	Cost
905-N	Dec. 11	T, W,Th	6:00-9:00	190 Hackensack Ave. Room 120	\$350

## PLUMBING INSPECTION (15 hrs.)

Course #	Start	Days	Hours	Location	Cost
907-N	Jan. 7	T, W,Th	6:00-9:00	190 Hackensack Ave. Room 120	\$350

Ray Krenc: raykre@bergen.org

## ELECTRICAL INSPECTION (21 hrs.)

Course #	Start	Days	Hours	Location	Cost
903-N	Jan. 21	T, W,Th	6:00-9:00	190 Hackensack Ave. Room 120	\$350

Dave Tarallo: davtar@bergen.org

## HEATING & COOLING INSPECTION (27 hrs.)

Course #	Start	Days	Hours	Location	Cost
906-N	Feb 10	T, W,Th	6:00-9:00	190 Hackensack Ave. Room 120	\$350

Lou Leichtweisz: loulei@bergen.org

## REPORTING (18 hrs.)

Course #	Start	Days	Hours	Location	Cost
910-N	Mar. 4	T, W,Th	6:00-9:00	190 Hackensack Ave. Room 120	\$350



**Book ordering:** Two textbooks must be purchased before classes begin. Please call the ASHI Store, 1-888-544-3699 to order your textbooks. Mechanical Systems & NHIE content and NHIE Structural Systems & Business.

### HOME INSPECTION LICENSING REQUIREMENTS

You must have a high school diploma or equivalent. 10 modules with Reporting, with approved instructors. Minimum of 40 hours of inspection required - minimum of \$30 per hour, payable to the home inspector. For further information and licensing requirements, Home Inspection Advisory Committee - 973-504-6233 • <http://www.njconsumeraffairs.gov/hom/>

Course start dates, location, and nights are subject to change. Please check website for updates or call 201-343-6000, ext. 2289.

# WELDING

Welding courses are open to both apprentices and non-apprentices. The program is geared toward the D1.1 Welding Certification, as sanctioned by the American Welding Society (AWS). Preparation for welding certification includes both classroom training and hands-on work experience. Most students take two to three years to complete the requirements for welding certification.

**All students must purchase their own welding equipment. Speak with the instructor on the first night of class. The information regarding the appropriate welding gear required for the course are listed below.**

## Basic Welding (78 hrs.) 870-A, 870-N

This comprehensive course is designed to accommodate the beginner as well as the person with some experience. Tradespeople in many fields, such as auto body repair, auto mechanics, diesel mechanics, and sheet metal can benefit by acquiring welding skills. Students receive instruction through lecture, demonstration, and hands-on practice. Topics include: S.M.A.W., G.M.A.W., oxy-fuel burning, and plasma cutting.

**ENROLLMENT IS LIMITED TO 15 STUDENTS.**

Course #	Start	Days	Hours	Location	Cost
870-A	Sept. 29	M & W	6:00-9:00	Teterboro Room 518	\$1075
870-N	Feb. 9	M & W	6:00-9:00	Teterboro Room 518	\$1075

## Tig Welding (150 hrs.) 873-A (Full Year Course – Fall Start Only)

Tradespeople in many fields such as auto body repair, auto mechanics, aircraft mechanics, and sheet metal can benefit by acquiring TIG welding skills. Students receive instruction in safe operating practice, welding theory in TIG or GTAW principles, equipment setup, and welding terms and definitions. Hands-on training in carbon steel, stainless steel and aluminum (all positions), and classroom theory in the science of TIG welding. **ENROLLMENT IS LIMITED TO 15 STUDENTS.**

Course #	Start	Days	Hours	Location	Cost
873-A	Oct. 7	T & Th	6:00-9:00	Teterboro Room 518	\$1775

## Welding Certification Preparation (150 hrs.) 872-A (Full Year Course – Fall Start Only)

This course is tailored specifically to fulfill the fast changing needs of today's welding industry. Upon completion, the student will be able to produce welds to Bridge, Highway and AWS D1.1 Structural Codes. Instruction is hands-on (all positions 6010 and 7018). Classroom theory includes a review of materials and the cross matching welding filler material to metals that will be welded. In addition, the program includes blueprint reading and math for welders, as well as metallurgy. Certification testing is done off-site. Instructors reserve the right to determine student readiness for certification testing. Certification testing fees and licensing fees are additional.

**(Prerequisite: Two years' welding experience)**

**ENROLLMENT IS LIMITED TO 15 STUDENTS.**

Course #	Start	Days	Hours	Location	Cost
872-A	Oct. 7	T & Th	6:00-9:00	Teterboro Room 518	\$1775

## Welding Safety Gear List

### ARC WELDERS:

- Fiber Metal helmet model #906
- Lens shade #10-11-12, plus clear plate
- Welding jacket or cape & apron
- Gauntlet welding gloves
- Safety glasses
- Chipping hammer
- Wire brush
- Pliers

### TIG WELDERS

- Welding jacket
- Fiber metal welding helmet model #909
- Lens shade #10-11-12, plus clear plate
- TIG gloves
- Pliers
- TIG handbook for GTAW by Miller

## WATER AND WASTEWATER OPERATION

### Introduction to Water and Wastewater Operations Part 1 (90 hrs.) 707-A (Fall Semester Only)

This course trains individuals to work in water and sewage treatment plants. Successful completion of Parts 1 and 2 of the course fulfills the educational requirement for the Grade 1 License. Candidates for this course should have an interest in water pollution control, science and mathematics. Topics include: basic math, physics, chemistry and microbiology, hydraulics, and basic operating principles of water and wastewater treatment.

**You must have 1 year work experience to be eligible for the exam.**

Course #	Start	Days	Hours	Location	Cost
707-A	Oct. 15	M & W*	6:00-9:00	Hackensack	\$815

\*Field trip may be on different nights.

### Introduction to Water and Wastewater Operations Part 2 (90 hrs.) 707-N (Spring Semester Only)

This course trains individuals to work in water and sewage treatment plants. Successful completion of Parts 1 and 2 of the course fulfills the educational requirement for the Grade 1 License. Candidates for this course should have an interest in water pollution control, science and mathematics. Topics include: administrative, water and wastewater sources, analysis, treatment, disinfection, and collection systems.

**(Prerequisite: Course #707-A)**

**You must have 1 year work experience to be eligible for the exam.**

Course #	Start	Days	Hours	Location	Cost
707-N	Feb. 9	M & W*	6:00-9:00	Hackensack	\$815

\*Field trip may be on different nights.

**Course start dates, location, and nights are subject to change. Please check website for updates or call 201-343-6000, ext. 2289.**

# COMPUTER TRAINING FOR THE PC

Training is provided on Windows computers and iPads with the latest operating systems and most popular software applications. New users can feel comfortable to start hands-on training with the basics. **Enrollment Is Limited To 14 Students. Course locations and nights are subject to change.**

## Computer Basics and the Internet (27 hrs.)

### 300-A, 300-N

Master the fundamentals of using a computer, navigating the Internet, managing files, and working with essential applications. Learn how to use email, perform safe and effective web searches, and explore cloud storage basics. This course also includes a brief introduction to Microsoft Word, Excel, and PowerPoint. Ideal for beginners, this course provides the skills needed to feel confident in a modern digital environment. (Recommended for all beginners.)

Course #	Start	Days	Hours	Location	Cost
300-A	Oct. 6	M & W	6:00-9:00	190 Hackensack Ave. Room 111	\$475
300-N	Feb. 11	M & W	6:00-9:00	190 Hackensack Ave. Room 111	\$475

## Microsoft Office Essentials: Word, Excel & Intro to PowerPoint (39 hrs.)

### 305-A, 305-N

This hands-on course provides practical training in the most widely used Microsoft Office programs—Word, Excel, and PowerPoint. Students will learn how to format professional documents, create and organize spreadsheets using formulas and charts, and get a brief introduction to PowerPoint for presentations. The course also explores creative, real-world uses of each application. Ideal for those looking to gain a well-rounded foundation in Office software. (Prerequisite: Course #300 or basic computer knowledge.)

Course #	Start	Days	Hours	Location	Cost
305-A	Dec. 1	M & W	6:00-9:00	190 Hackensack Ave. Room 111	\$585
305-N	Apr. 6	M & W	6:00-9:00	190 Hackensack Ave. Room 111	\$585

## Introduction to Artificial Intelligence (9 hours)

### 320-A, 320-N

Explore the basics of AI in this engaging introductory course designed for adult learners. Learn how machines think and learn, examine ethical issues, and try out simple AI tools through hands-on activities. This class is ideal for those curious about how AI is shaping our world and want a solid, beginner-friendly foundation.

Course #	Start	Days	Hours	Location	Cost
320-A	Oct. 7	T & Th	6:00-9:00	190 Hackensack Ave. Room 111	\$165
320-N	Feb. 17	T & Th	6:00-9:00	190 Hackensack Ave. Room 111	\$165

## AI at Work: A Beginner's Guide (15 hours)

### 321-A, 321-N

Discover how AI can improve your daily work. Learn practical uses of AI to streamline office tasks, make informed decisions, and boost productivity. Through interactive exercises and real-world examples, you'll build the confidence to integrate AI into your workflow. (Prerequisite: Introduction to Artificial Intelligence or equivalent experience.)

Course #	Start	Days	Hours	Location	Cost
321-A	Oct. 21	T & Th	6:00-9:00	190 Hackensack Ave. Room 111	\$270
321-N	Mar. 3	T & Th	6:00-9:00	190 Hackensack Ave. Room 111	\$270

## AI at Home: A Beginner's Guide (9 hours)

### 322-A, 322-N

Explore how AI can enhance your home life—from personal productivity to home automation. This hands-on course introduces easy-to-use tools and practical applications designed to simplify everyday routines. No tech background required.

Course #	Start	Days	Hours	Location	Cost
322-A	Nov. 13	T & Th	6:00-9:00	190 Hackensack Ave. Room 111	\$165
322-N	Mar. 24	T & Th	6:00-9:00	190 Hackensack Ave. Room 111	\$165

## Exploring Google's AI Ecosystem (9 hours)

### 323-A, 323-N

Gain hands-on experience with Google's AI tools like Vertex AI, Google AI Studio, and Gemini models. Learn how to apply these tools to solve real-world problems and unlock creative and technical innovation. This course is suited for beginners and enthusiasts alike.

Course #	Start	Days	Hours	Location	Cost
323-A	Dec. 4	T & Th	6:00-9:00	190 Hackensack Ave. Room 111	\$165
323-N	Apr. 7	T & Th	6:00-9:00	190 Hackensack Ave. Room 111	\$165

Course start dates, location, and nights are subject to change. Please check website for updates or call 201-343-6000, ext. 2289.

# TECHNICAL COMPUTER TRAINING

BCTS continues to pioneer many up-to-date technology-related activities to keep you current. As a leader in many technical areas, BCTS offers the very latest equipment, software and training methods. Our classes can help you plan and implement productivity improvements in small manufacturing environments ... or launch and maintain a network ... or engage in design and solid modeling projects using the latest release of AutoDesk software.

**Course locations and nights are subject to change. Basic computer skills required.**

## AUTODESK PREMIER TRAINING CENTER

### Introduction to AutoCad (24 hrs.) 380-A, 380-N

This course is designed as an introduction to computer aided drafting with Autodesk AutoCAD software. Students gain the necessary skills to create and edit geometric shapes in preparation for engineering drawings. The course covers many aspects of AutoCAD including file management, construction of primitive geometrical shapes and entity manipulation. Instructor lectures and demonstrations followed by hands-on student work. Equipment includes high-end Dell workstations.  
**ENROLLMENT IS LIMITED TO 12 STUDENTS.**

Course #	Start	Days	Hours	Location	Cost
380-A	Oct. 6	M & W	6:00-9:00	200 Hackensack Ave. Room 166	\$445
380-N	Jan. 26	M & W	6:00-9:00	200 Hackensack Ave. Room 166	\$445

### Introduction to Autodesk Inventor and 3D Printing (24 hrs.) 383-A, 383-N

This course is designed as an introduction to Autodesk Inventor and the steps necessary to create and edit parts, assemblies and drawings. The primary objective of this course is to teach the essential skills needed for parts of simple to moderate complexity. Also included is an introduction to 3D Printing, with the goal of fabricating student designs on our 3D printers. Instructor lecture and demonstrations followed by hands-on student work. Equipment includes high-end Dell workstations, MakerBot Replicators and Dimension SST 1200es 3D Printers. (Prerequisite: Course #380 or equivalent.) **ENROLLMENT IS LIMITED TO 12 STUDENTS.**

Course #	Start	Days	Hours	Location	Cost
383-A	Nov. 3	M & W	6:00-9:00	200 Hackensack Ave. Room 166	\$445
383-N	March 2	M & W	6:00-9:00	200 Hackensack Ave. Room 166	\$445

### Autodesk Revit (24 hrs.) 375-A, 375-N

This course is designed as an introduction to architectural design and the necessary tools to create and edit geometric shapes in preparation for blueprints. The course covers many aspects of Revit software including file management, construction of primitive geometrical shapes, and entity manipulation. Students will also learn to enhance productivity with library symbols, layer organization, advanced drafting techniques, and various output methods. Instructor lecture and demonstrations followed by hands-on student work. Course includes an exploration into architectural styles and design factors. It ends with a demonstration of 3D modeling and architectural walkthroughs. This course enables all students to have an introductory overview of the architectural design process. (Prerequisite: Course #380 or equivalent). **ENROLLMENT IS LIMITED TO 12 STUDENTS.**

Course #	Start	Days	Hours	Location	Cost
375-A	Nov. 3	M & W	6:00-9:00	200 Hackensack Ave. Room 164	\$445
375-N	April 6	M & W	6:00-9:00	200 Hackensack Ave. Room 164	\$445

### Introduction to CNC Programming and Laser Cutting (24 hrs.) 379-N

This course provides a basic understanding of Numerical Control programming, system positioning and file transfer. Setup, operation and maintenance procedures of CNC equipment also discussed. Instructor lecture and demonstrations followed by hands-on student work. Course includes a review of AutoCAD and an introduction to basic G code programming. Equipment includes high-end Dell workstations, Davinci Mini CNC Milling Machine and Epilog Helix 60 watt Laser Cutter/Engraver. (Prerequisite: Course #380 or equivalent.) **ENROLLMENT IS LIMITED TO 12 STUDENTS.**

Course #	Start	Days	Hours	Location	Cost
379-N	May 11	M & W	6:00-9:00	200 Hackensack Ave. Room 166	\$445



Course start dates, location, and nights are subject to change. Please check website for updates or call 201-343-6000, ext. 2289.

COMPTIA CERTIFICATION PATHWAY

**CompTIA Courses**

BCTS is proud to offer the entire CompTIA Certification Pathway to our students.

We know that IT support professionals work with critical-path teams, including security operations center (SOC) team members, cloud and network administrators, and applications analysts. These teams offer a glimpse of future options and a gateway to career advancement.

CompTIA is the key to unlocking these options and setting you on the IT career pathway of your choosing. Whether it is Infrastructure, Cybersecurity and Professional Skills, they all offer a world of opportunities for growth.

CompTIA certifications align with the skillsets needed to support and manage IT infrastructure and security. Enter where appropriate for you. Consider your experience and existing certifications or course of study today.

**NOTE: The cost of the exam voucher is NOT INCLUDED with this these courses. It is up to the student acquire them.**

**CompTIA A+ Certification & Networking ((Hardware and Software) (Core 1 and Core 2) (60 hrs.) 401-A**

CompTIA A+ is the preferred qualifying credential for technical support and IT operational roles. CompTIA A+ certified professionals are proven problem solvers. They support today's core technologies from security to cloud to data management and more. CompTIA A+ is the industry standard for launching IT careers into today's digital world. CompTIA A+ 220-1001 covers mobile devices, networking technology, hardware, virtualization and cloud computing and network troubleshooting. CompTIA A+ 220-1002 covers installing and configuring operating systems, expanded security, software troubleshooting and operational procedures.

In order to receive the CompTIA A+ certification, you must pass two exams: Core 1 (220-1001) and Core 2 (220-1002) which will be covered in this course. **NOTE: Exam voucher is NOT INCLUDED with this class.**

Course #	Start	Days	Hours	Location	Cost
401-A	Oct. 6	M & W	6:00-9:00	190 Hackensack Ave. Room 111	\$1070

Alex Chan: [alecha@bergen.org](mailto:alecha@bergen.org)

**423-N CompTIA Network+ (48 hrs.) 423-N**

This course is for students who are preparing for the CompTIA Network+ certification exam N10-007. This course is intended for entry-level computer support professionals with a basic knowledge of computer hardware, software, and operating systems who wish to increase their knowledge and understanding of networking concepts and acquire the required skills to prepare for a career in network support or administration. **(Prerequisite: Course #401, CompTIA A+.)**

**NOTE: Exam voucher is NOT INCLUDED with this class.**

Course #	Start	Days	Hours	Location	Cost
423-N	Jan. 5	M & W	6:00-9:00	190 Hackensack Ave. Room 111	\$880

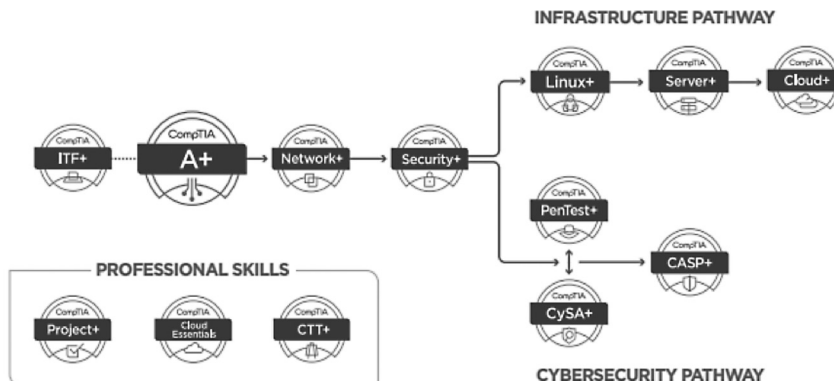
Alex Chan: [alecha@bergen.org](mailto:alecha@bergen.org)

**424-N CompTIA Security+ (48 hrs.) 424-N**

This course is for students who are preparing to take the CompTIA Security+ certification exam SY0-501. This course is aimed toward the IT professional who has networking and administrative skills in Windows-based Transmission Control Protocol/Internet Protocol (TCP/IP) networks; plus familiarity with other operating systems, such as macOS, Unix or Linux; and who wants to further a career in IT by acquiring foundational knowledge of security topics. The exam will verify the successful candidate has the knowledge and skills required to assess the security posture of an enterprise environment and recommend and implement appropriate security solutions; monitor and secure hybrid environments, including cloud, mobile, and IoT; operate with an awareness of applicable laws and policies, including principles of governance, risk, and compliance; identify, analyze, and respond to security events and incidents. **Prerequisite: CompTIA Network+.** Students should have basic Windows user skills and a fundamental understanding of computer and networking concepts. Achievement of CompTIA A+ and Network+ certifications, plus two years of experience with IT administration with a security focus. **NOTE: Exam voucher is NOT INCLUDED with this class.**

Course #	Start	Days	Hours	Location	Cost
424-N	March 23	M & W	6:00-9:00	190 Hackensack Ave. Room 111	\$880

Alex Chan: [alecha@bergen.org](mailto:alecha@bergen.org)



Course start dates, location, and nights are subject to change. Please check website for updates or call 201-343-6000, ext. 2289.

REGIONAL CISCO NETWORKING ACADEMY

**Cisco Networking Academy/  
CCNA Part 1 (72 hrs.)  
393-A (Fall Semester Only)**

This course introduces students to the basics of networking. The course is three parts. The first part covers various types of networks and how they work. Students learn the following fundamentals: networks and layered communication, OSI model, networking devices such as hubs, routers, switches and bridges; IP addressing and subnetting, media and design, LAN and WAN hardware, coaxial, UTP, optical fiber cable, and topologies. **There may be some changes due to the restructuring of the new class being rolled out this year. (Prerequisite:** Students should have at least one to two years experience in either the Mac OS or Windows. Students should have access to Internet.) **ENROLLMENT IS LIMITED TO 12 STUDENTS.**

Course #	Start	Days	Hours	Location	Cost
393-A	Oct. 11	Sat.	8:30 - 3:30 (1/2 hr lunch)	200 Hackensack Ave. Room 164	\$1620

Alex Chan: [alecha@bergen.org](mailto:alecha@bergen.org)

**Cisco Networking Academy/  
CCNA Part 2 (68 hrs.)  
394-N (Spring Semester Only)**

In the second part students will learn: OSI model layers, router components, router start/up, router configuration, CISCO IOS software (operating system), TCP/IP model, and routing protocols. **There may be some changes due to the restructuring of the new class being rolled out this year. (Prerequisite:** Students must successfully complete Part 1 Training (course #393) and have home access to the Internet.) **ENROLLMENT IS LIMITED TO 12 STUDENTS.**

Course #	Start	Days	Hours	Location	Cost
394-N	Jan. 24	Sat.	8:30 - 3:30 (1/2 hr lunch)	200 Hackensack Ave. Room 164	\$1535

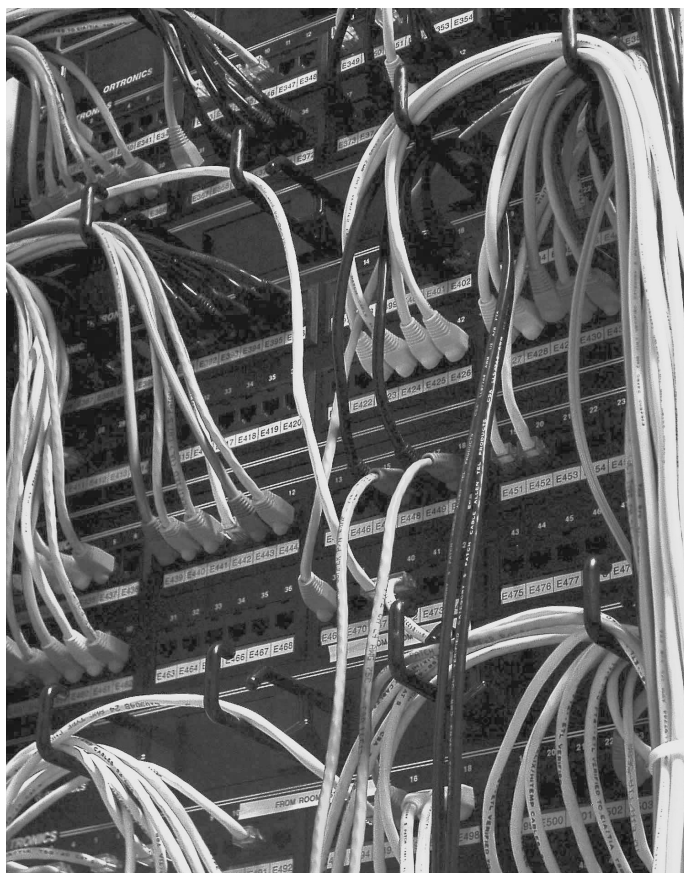
Alex Chan: [alecha@bergen.org](mailto:alecha@bergen.org)

**Cisco Networking Academy/  
CCNA Part 3 (56 hrs.)  
395-N (Spring Semester Only)**

Through e-learning and a hands-on approach, students will learn the protocols network standards and router programming that is in the CISCO System products. Students will gain classroom and laboratory experience that empower them to enter employment and/or further education and training in the computer networking field. Topics include LAN switching, VLANs, network design, IGRP protocol, access lists, WAN, network design, point-to-point protocol, frame relay and a final review of the CCNA exam. **There may be some changes due to the restructuring of the new class being rolled out this year. (Prerequisite:** Students must successfully complete Part 1 & 2 Training (courses #393 & #394) and have home access to the Internet.) **ENROLLMENT IS LIMITED TO 12 STUDENTS.**

Course #	Start	Days	Hours	Location	Cost
395-N	April 25	Sat.	8:30 - 3:30 (1/2 hr lunch)	200 Hackensack Ave. Room 164	\$1284

Alex Chan: [alecha@bergen.org](mailto:alecha@bergen.org)



Course start dates, location, and nights are subject to change. Please check website for updates or call 201-343-6000, ext. 2289.

# OFFICE 365 & MICROSOFT 365 CERTIFICATION PROGRAM

**New  
Courses!**

**What is Office 365?** It is a cloud-based subscription service that brings together the best tools for the way people work today. By combining best-in-class apps with powerful cloud services, Office 365 lets anyone create and collaborate anywhere on any device.

**What is Microsoft 365?** It is a complete, intelligent solution, including Office 365, Windows 10, and Enterprise Mobility + Security, that empowers everyone to be creative and work together, securely.

This certification program will give you the knowledge and skills to maximize the benefits of both Office 365 and Microsoft 365. You will learn how to configure, setup and administer all the Office 365 & Microsoft 365 products. You will have instructor lead classes and hands on time with all aspects and be proficient in explaining all programs and the benefits of them.

**We offer 2 different certifications:**

**End User** (Covers Office 365) – We recommend this for everyone who uses Office 365. Especially those who work in a company or organization who uses Office 365. This will allow you to maximize everything Office 365 has to offer, making your life easier and more efficient.

**Administration** (Covers Office 365 & Microsoft 365)\* – We recommend this for Information Technology (I.T.) professionals who are responsible for a company or organizations Office 365 or Microsoft 365 environment.

## OFFICE 365 END USER CERTIFICATION

### Office 365 End User Certification Program (72 hrs.) M001:13-A, M001:13-N

**End User** (Covers Office 365) – We recommend this for everyone who uses Office 365. Especially those who work in a company or organization who uses Office 365. This will allow you to maximize everything Office 365 has to offer, making your life easier and more efficient.

(Prerequisite: Basic computer knowledge.)

Course #	Start	Days	Hours	Location	Cost
M001:13-A	Oct. 6	M & W	6:00-9:00	190 Hackensack Ave. Room 111	\$890
M001:13-N	Jan. 12	M & W	6:00-9:00	190 Hackensack Ave. Room 111	\$890

Alex Chan: [alecha@bergen.org](mailto:alecha@bergen.org)

## OFFICE 365 & MICROSOFT 365 ADMINISTRATION CERTIFICATION

Prerequisite for this certification is completion of the End User certification.

### Office 365 Administration Certification Program (72 hrs.) M014:20-N

**Administration** (Covers Office 365 & Microsoft 365)\* – We recommend this for Information Technology (I.T.) professionals who are responsible for a company or organizations Office 365 or Microsoft 365 environment. (Prerequisite for this certification is completion of the End User certification.)

Course #	Start	Days	Hours	Location	Cost
M014:20-N	Apr. 27	M & W	6:00-9:00	190 Hackensack Ave. Room 111	\$520

Alex Chan: [alecha@bergen.org](mailto:alecha@bergen.org)



Course start dates, location, and nights are subject to change. Please check website for updates or call 201-343-6000, ext. 2289.

# FIREMEN - STATIONARY ENGINEERING

The New Jersey Department of Labor—Industry Mechanical Inspection Bureau establishes the licensing requirements. Although anyone may attend the license preparation classes, the specific work experience requirements must be met before a student is permitted to sit for a state examination. These requirements are described under each preparatory course outlined below. Students are also advised that firemen and engineer's licenses apply to the State of New Jersey only, since rules and regulations vary from state to state. Prospective students holding a Fireman's or Engineer's rating from military may apply work experience.

For current licensing requirements, contact the Bureau of Boiler and Pressure Vessel Compliance at 609-292-2345.

Course locations and nights are subject to change.

## Engineer, Blue Seal Steam (75 hrs.) 702-A (Fall Semester Only)

This course prepares qualified students to sit for the Blue Seal, Third Grade Steam Engineer's License examination. **State eligibility requires that an applicant must have a Fireman-in-Charge License and six months experience in a plant of over 500 boiler horsepower.**

Course #	Start	Days	Hours	Location	Cost
702-A	Oct. 7	T & Th	6:00-9:00	200 Hackensack Ave. Room 34	\$845

John Nesbitt: [johnes@bergen.org](mailto:johnes@bergen.org)

## Fireman, High Pressure Black Seal in Charge (75 hrs.) 703-N (Spring Semester Only)

This license preparation course enables qualified students to sit for the High Pressure Fireman's License examination. **State eligibility requires that an applicant must have worked as a Helper, Apprentice or Assistant to a Licensed Fireman in a high-pressure plant for at least three months.**

Course #	Start	Days	Hours	Location	Cost
703-N	Feb. 17	T & Th	6:00-9:00	200 Hackensack Ave. Room 34	\$845

John Nesbitt: [johnes@bergen.org](mailto:johnes@bergen.org)

## Fireman, Low Pressure Black Seal (48 hrs.) 705-A, 705-B, 705-N, 705-O, 705-P

Upon completion, qualified students will be able to sit for the Low Pressure Black Seal Fireman's License examination. **State eligibility requires that an applicant has worked for a minimum of three months as a Helper, Apprentice, or Assistant in a facility with low-pressure boilers of over 100 boiler horsepower, documented with a logbook.**

Course #	Start	Days	Hours	Location	Cost
705-A	Oct. 15	M & W	6:00-9:00	200 Hackensack Ave. Room 34	\$555
705-B	Oct. 18	Saturday	8:00-11:30	190 Hackensack Ave. Room 119	\$555
705-N	Jan. 12	M & W	6:00-9:00	200 Hackensack Ave. Room 34	\$555
705-O	Jan. 17	Saturday	8:00-11:30	190 Hackensack Ave. Room 119	\$555
705-P	March 10	M & W	6:00-9:00	200 Hackensack Ave. Room 34	\$555

John Nesbitt: [johnes@bergen.org](mailto:johnes@bergen.org)

## ELECTRO-MECHANICS

### Electro-Mechanic Maintenance (78 hrs.) 620-A (Fall Semester Only)

This two part course, one mechanical and the other electrical, covers the basic knowledge needed to start or progress in the areas of residential, commercial, or industrial maintenance.

The first session (fall): Mechanics (78 Hrs), covers basic mathematics, unit's conversion, basic concepts: pressure, vacuum, torque, bearings: different types, applications, lubrication, pumps: different types, applications, problems, repairs, valves and piping: selection, materials, applications, compressors: different types, applications, problems, repairs, boilers, blueprint reading, and safety.

Course #	Start	Days	Hours	Location	Cost
620-A	Oct. 15	M & W	6:00-9:15	190 Hackensack Ave. Room T.B.A.	\$890

### Electro-Mechanic Maintenance (78 hrs.) 621-N (Spring Semester Only)

The second part (spring): Electrical (78 Hours) covers electrical laws and their applications, direct current and alternating current, series, parallel and series-parallel circuits, voltage and amperage distribution in each case, magnetic fields applications, motor generator and transformers, three-phase circuits: applications, basic connections and protections, blueprint reading, and safety.

Course #	Start	Days	Hours	Location	Cost
621-N	Feb. 11	T & Th	6:00-9:15	190 Hackensack Ave. Room T.B.A.	\$890

Course start dates, location, and nights are subject to change. Please check website for updates or call 201-343-6000, ext. 2289.

# LIFESTYLE

A healthy lifestyle helps to improve your health and well-being. Healthy living has a lifelong effect. There are various ways to become and stay healthy including physical activities, weight management, healthy eating, and stress management. We offer a variety of Lifestyle classes. Course locations and nights are subject to change.

## Self Defense (18 hours) 804-S, 804-T

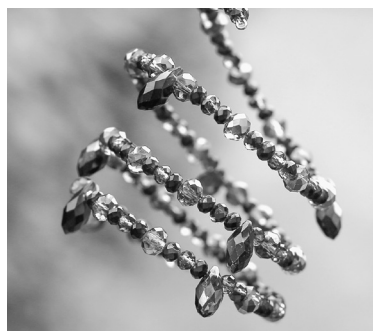
This Basic Self Defense Class will entail a variety of disciplines. Physical fitness combined with the ability to defend yourself is healthy for the mind as well as the body. Krav Maga for conflict resolution, situational awareness and avoiding trouble. Filipino Martial Arts teaches people to use everyday objects as weapons such as car keys, magazines, etc. Muay Thai is a powerful form of kickboxing involving punches, elbows, knees and kicks. Grappling includes wrestling. Submission Grappler may come to a few sessions to teach his expertise. Brazilian Jujitsu can be used for ground defense. 1st hour - Conditioning 2nd hour - Basic Lesson 3rd hour - Particular concerns of students, continue lesson, self defense Students need to bring: MMA Gloves or Boxing Gloves

Course #	Start	Days	Hours	Location	Cost
804-S	Oct 11	Sat.	9:00-12:00	Hackensack Thearts Rm.	\$205
804-T	Jan.24	Sat.	9:00-12:00	Hackensack Thearts Rm.	\$205

## Jewelry Making (18 Hours) 805-S, 805-T

Learn the basics of jewelry making. Students will learn how to use the tools of the trade to make their own jewelry. Class begins with creating bracelets and then moves on to learning how to make necklaces with clasps, findings, etc. Students will need to purchase the following items: Small tool kit (pliers) under \$10.00, Beading mat or thick piece of felt, Selection of beads. Findings: including clasps, chain links. Instructor will review everything the first night in case anything else is needed

Course #	Start	Days	Hours	Location	Cost
805-S	Oct. 16	Thurs.	6:00-9:00	Hackensack Room TBD	\$239
805-T	Feb. 19	Thurs.	6:00-9:00	Hackensack Room TBD	\$239



## Basic Crochet (12 Hours) 806-S, 806-T

Students will learn: Basic crochet technology, Creating a chain, Single crochet stitch, Double crochet stitch, Binding off. Students are to bring the following supplies to class: Worsted weight yarn / medium weight (4) Crochet hook size 5.5 Large-eyed blunt needle. Additional items: Scissors Tape measure or ruler.

Course #	Start	Days	Hours	Location	Cost
806-S	Oct. 7	Tues.	6:00-9:00	Hackensack Room TBD	\$127
806-T	March 17	Tues.	6:00-9:00	Hackensack Room TBD	\$127

## Basic Knitting (12 Hours) 807-S, 807-T

Students will learn: Basic knit terminology, Casting on, Knit stitch, Purl stitch, Binding off. Students are to bring the following supplies to class: Worsted weight yarn / medium weight (4) Knitting Needles, Size 11 Large-eyed blunt needle Additional Items: Scissors Tape measure or ruler.

Course #	Start	Days	Hours	Location	Cost
807-S	Oct. 21	Tues.	6:00-9:00	Hackensack Room TBD	\$127
807-T	April 21	Tues.	6:00-9:00	Hackensack Room TBD	\$127

## Fashion Design and Sewing (18 hours) 808-S, 808-T

This hands-on, project based class is for a student who has never sewn on a button or turned on a sewing machine to students who are competent sewers and would like to explore fashion design, draping and pattern-making. All students will learn basic hand and machine sewing, fashion history, draping, creating the pattern from draping and how to create garments including a variety of closures. Students will be able to make curtains, bedding, clothing, props, costumes and hundreds of other craft projects of their choosing. Including Project-Runway style challenges for students interested in "creativity on demand", this class will cater to a variety of learning styles and skills in a warm, inclusive atmosphere of creative learning and real-world skill development.

Course #	Start	Days	Hours	Location	Cost
808-S	Oct. 27	M & W	6:00-8:00	Hackensack Room 7	\$318
808-T	April 20	M & W	6:00-8:00	Hackensack Room 7	\$318

Victoria Pero: vicper@bergen.org

Course start dates, location, and nights are subject to change. Please check website for updates or call 201-343-6000, ext. 2289.

# BERGEN MAKERSPACE

Bergen Makerspace is a community-learning center committed to our three founding principles: education, inspiration and community. Come learn something new in one of our classes or join us in our open lab and create something truly original.

- Access to cutting edge equipment and tools
- Shared workspace for you to work on your projects
- Community of makers who share your passion

## 3D Printing

We have a variety of laser cutters that will let you cut, engrave, and score a variety of materials including wood and acrylic.

## Laser Cutting

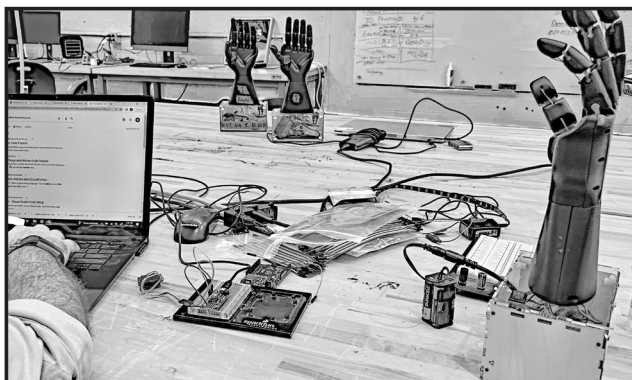
Our Epilog Helix 60 Watt laser cutter will let you cut and engrave a variety of materials including wood and acrylic.

## Free Open Night

Open Nights provide an opportunity for our community of makers to come together and work on projects in a shared workspace. Feel free to visit us with your project or simply drop by to explore the space. Admission to our Open Night events is free. Basic hand tools and electronic equipment are available upon request. Laser cutting and 3D printing services are available for an additional cost. The Bergen Makerspace is open to individuals aged 16 and older. For those aged 16 and 17, a signed permission slip from a guardian is required.

Register at: [bergenmakerspace@bergen.org](mailto:bergenmakerspace@bergen.org)

For more information, please visit:  
<http://bergenmakerspace.bergen.org>  
Phone: 201-343-6000 x6253 (MAKE)  
284 Hackensack Ave., Hackensack



# EVENING SCHOOL GENERAL INFORMATION

---

## ADMISSION

**General:** Adult programs are open to persons over the age of 16 who can profit from training, are capable of performing the course work, meet prerequisite requirements, and can pay the applicable fees. Course start dates, location, and nights are subject to change.

**High School Students:** High School students 16 years or older may enroll in Adult Education classes if they secure written permission from a parent or guardian and high school guidance counselor prior to registration.

**Older Adults:** Persons 62 years of age or older may attend any Adult Education class at a **50%** tuition discount and pay applicable book, out-of-county or other fees.

**County of Bergen Employees:** Employees of the "County of Bergen" (not those just working in Bergen County) who enroll in part-time classes related to their employment will receive a tuition discount of **25%** and pay applicable book, out-of-county, late, or other fees. The employee must present a letter from the County of Bergen at the time of registration stating that the course is directly related to his/her job. Class placement is subject to space availability provided that tuition-paying students constitute the minimum number of students required to run a course.

**Out-of County Residents:** Out-of County residents will be accepted. An additional fee of **\$50** will be charged at the time of registration for each and all courses.

**Late Registration Fee:** An additional fee of **\$50** will be charged for those who register on or after the start date for each and all courses.

**Paying With Cash at Registration:** If paying with cash, we can only accept exact amounts.

## ON-LINE REGISTRATION

- GO TO <https://adulthood.bergen.org>
- COMPLETE REGISTRATION AND W-9S.

APPRENTICES: MEET WITH THE APPRENTICESHIP COORDINATOR, REGISTER ON-LINE, THEN PAY AFTER APPROVAL.

## REFUND & CANCELLATION POLICY

When the school cancels a course, 100% of course fees will be refunded. At the school's discretion, classes may be in person, online, or a combination of both, depending on the situation at any given time. The school reserves the right to cancel classes due to insufficient enrollment. Registrants will be notified by phone or email when a class is cancelled. Please provide a cell phone number. A student wishing to withdraw from class must do so in writing. Please address your letter to Administrator, Adult & Continuing Education, BCTS, 190 Hackensack Avenue, Adult Ed. Building, Hackensack, NJ 07601. Failure to attend class does not constitute an official withdrawal from class. **NO refunds will be given to students who have attended more than one full class session.** Refund requests **MUST** be received no later than two weeks after the start date of the class.

## CLASS SIZE, PLACEMENT, AND SCHEDULES

A minimum of 12 students is required to begin most courses. Every attempt will be made to maintain the class schedule and locations as printed. The school, however, reserves the right to make changes. The program and requirements are subject to change without notice at any time, at the discretion of the school. The school reserves the right to cancel, reschedule, or combine classes when enrollment is insufficient or other scheduling problems exist. All students will be scheduled into classes based on availability and discretion of the administration. The school expects that each student read and comply with regulations set in the catalog, other school publications and announcements.

## TEXTBOOKS

The purchase of textbooks and materials may be required for certain classes and is the responsibility of the student. On the first night of class, your instructor will inform you of where you can purchase the necessary text and/or materials. The Adult Education Office will not be purchasing books for direct sale to students.

## SAFETY, ACCIDENTS & SCHOOL INSURANCE

All students must comply with safety regulations. Safety instruction is an integral part of all laboratory and shop classes. According to Board Policy, the individual accepts responsibility for his/her own safety. The Board does not accept liability for accidents that occur due to human error or negligence. For protection and safety, some courses may require students to purchase safety equipment such as glasses, helmets, and gloves. Students in all shops are required to wear OSHA-approved safety glasses. All accidents must be reported immediately to the Adult Education office. The Bergen County Technical Schools' Board of Education does not pay any medical or hospital bills incurred as a result of an accident.

### EMERGENCY SCHOOL CLOSINGS

In the event of weather or other emergency situations, school closing announcements will be listed on our website at [www.bergen.org](http://www.bergen.org) and made periodically on the following radio stations: WOR – 710 AM, WCBS – 880 AM, and WINS – 1010 AM, and the following television stations: WNYW – Fox 5, WNBC – 4, News 12 New Jersey. Or call Bergen County Technical Schools at 201-343-6000, ext. 2289 for information about evening school classes. Evening classes are **ALWAYS CANCELLED** when the Bergen County Technical Schools are closed. Please do not contact the Police Department for snow and/or emergency closings.

### PUBLIC SAFETY AND SECURITY

Bergen County Technical Schools Adult & Continuing Education is committed to providing a safe and productive educational environment for its students, employees and guests. We comply with the *Jeanne Clery Disclosure of Campus Security Policy and Campus Crime Statistics Act* and the *Violence Against Women Reauthorization Act of 2013 (VAWA)*, which includes amendments to the *Clery Act*. Important safety and security information as well as crime statistics are available on our website at: <https://bcts.bergen.org/index.php/public-safety-and-security>.

We ask that you please take the time to review this important information included in our Annual Security Report. You may also request a printed copy of this information by contacting the Adult & Continuing Education office at: 190 Hackensack Avenue, Hackensack, NJ 07601 or by calling (201) 343-6000 extension 2288 or 2289.

### CONDUCT

**Smoking and vaping are prohibited** in all buildings and on all grounds of the Bergen County Technical Schools. The use of alcohol or drugs is strictly prohibited on school property. Violators lose their rights to training. The Bergen County Police will be notified immediately. Proper conduct is required of adult students at all times. The principal reserves the right to dismiss any student who does not comply with school rules and regulations.

### PARKING

Parking in a designated Fire Lane or other prohibited areas is strictly prohibited. Violators may be ticketed by the Bergen County Police. Please lock your car – the District is not responsible for theft or damage to your vehicle on school property.

190/200 Hackensack Avenue campus: Parking is not available to students in the upper South parking lot, which is reserved for faculty. **Students must park in the lower lot.**

*It is the policy of the Bergen County Technical Schools not to discriminate in its educational programs, activities, employment practices or admission policies and practices on the basis of race, color, national origin, sex, or handicap. Lack of English language will not be a deterrent to admission at the Bergen County Technical Schools.*

---

# LICENSING PHONE NUMBERS & WEBSITES

### PLUMBING LICENSING REQUIREMENTS

STATE BD. OF EXAMINERS OF MASTER PLUMBERS: 973-504-6420

<http://www.njconsumeraffairs.gov/plu/>

### ELECTRICAL LICENSING REQUIREMENTS

STATE BD. OF EXAMINERS OF ELECTRICAL CONTRACTORS: 973-504-6410

<http://www.njconsumeraffairs.gov/elec/>

### HOME INSPECTION LICENSING REQUIREMENTS

HOME INSPECTION ADVISORY COMMITTEE: 973-504-6233

<http://www.njconsumeraffairs.gov/hom/>

### BOILER LICENSING REQUIREMENTS

BUREAU OF BOILER & PRESSURE VESSEL COMPLIANCE: 609-292-2345

### HVACR LICENSING REQUIREMENTS

STATE BD. OF EXAMINERS OF HEATING, VENTILATING, AIR CONDITIONING & REFRIGERATION (HVACR)

CONTRACTORS: 973-504-6250

<http://www.njconsumeraffairs.gov/hvacr/>

# FULL-TIME DAY PROGRAM

## SHORT TERM TRAINING-HIGH WAGE CAREERS

The Full-Time Day Program offers the latest specialized, professional training for high-wage, high-demand occupations. Whether you are looking to upgrade your present skills, change your career, or are just starting out, our highly-qualified, industry-certified instructors can provide you with a practical, hands-on approach to training in fields where skilled employees are needed. For a fraction of the cost of a private training institution, the Full-Time Day Program offers career counseling, job placement assistance, and access to state-of-the-art equipment to enable you to master marketable job skills. Financial aid is available for those who qualify (subject to federal regulations). The Bergen County Technical School District's reputation and connections with local industry enhance our students' opportunities for excellent job placement.

### Heating, Air Conditioning, Ventilation and Refrigeration Maintenance Technology/Technician

HVACR prepares students to install, maintain and repair equipment ranging from room air conditioners through central split systems to large complex food or drug storage refrigeration systems. Topics include: residential, commercial, institutional and industrial HVACR systems. Special skills will include soldering, brazing and piping, use of test equipment, hand and power tools; installation and servicing of electrical, refrigeration, comfort cooling, solar thermal and photovoltaic (PV) equipment. Fundamentals include layout and functional design of components including motors, controls, switches, gauges, wiring, harnesses, valves, pumps, coils, piping, condensers, compressors, and defrosting. Student projects will consist of hands-on installation of heating and cooling systems (including central and solar energy systems) before graduation. Students will have opportunities to sit for industry-based competency (HVAC Excellence/Employment Ready) and EPA-approved universal certification exams.

**Length: 1053 Hours (approximately 10 months)\*\***

**Tuition: \$16,650.00\***

\*Cost of Industry Exams, Certifications, books, appropriate clothing, personal tools and supplies are an additional expense to the student.

\*Federal aid and government grants available to those who qualify.

\*\*Program length does not include holidays, school closings, etc.

Students are able to participate in the Work-Based Activity (WBA) internship program for 192 hours of fieldwork over a eight (8) week period. Students attend the WBA four (4) days a week and attend school one (1) day a week. Students may secure their own employer or receive assistance from the Job Placement Specialist. Students who do not wish to participate in the WBA complete an in-class cumulative culminating project similar to the field experience.



### Business Administration and Management (BAM) (Hybrid)

The objective of the Business Administration and Management (BAM) hybrid program is to prepare students for a career in administrative management. In a mix of both in-person and remote participation, students will learn the skills necessary to thrive in today's business environment. From acing the interview process and developing office skills to successfully engaging with the public. This program will expand the existing knowledge students have of Microsoft, Google, and QuickBooks.

Our exciting and interactive Introduction to Cybersecurity allows students to obtain the knowledge and skills necessary to identify and prevent security risks.

The modular curriculum design provides consistency, interactive activity, critical thinking skills and practical application of the material covered. The three modules consist of:

- 1) Career Development, Introduction to Business, Business Ethics, Marketing and Management.
- 2) Computer Applications: Google and Microsoft, CompTIA Computer Fundamentals.
- 3) QuickBooks/Payroll Accounting.

Upon course completion, students can take a test for certifications in Microsoft, QuickBooks, and IT Fundamentals. These three certifications are foundations for success needed in today's global business environment.

**Length: 700 hours (approximately 7 months)\*\***

**Tuition: \$6,300.00\***

\*Cost of Certifications are included

\*Cost of textbooks are not included.

\*Articulation Agreement with Felician University: Transfer up to 12 credits plus a tuition discount

\*Federal aid and government grants available to those who qualify.

\*\*Program length does not include holidays, school closings, etc.



## Electrician

Take this first step towards a career in the electrical trades and get a head start in preparing for an Electrical Contracting License. Subjects covered include AC/DC theory, motors and motor controls, metering and test equipment, telecommunications, fire alarms and security systems, wiring materials and techniques, and conduit bending. Students also learn about hand and power tools, safety, blueprint reading and estimating, and construction math. All topics and proficiencies are covered in accordance with the National Electrical Code, and students will learn about new "green" technologies including both solar and wind power systems.

**Length: 1200 Hours (approximately 12 months)\*\***

**Tuition: \$18,500.00\***

\*Cost of Industry Exams, Certifications, books, appropriate clothing, personal tools and supplies are an additional expense to the student.

\*Federal aid and government grants available to those who qualify.

\*\*Program length does not include holidays, school closings, etc.

## Plumbing Technology/Plumber

This course is designed to prepare graduates for placement into the plumbing and heating industry, rapidly advancing to highly rewarding careers. Subjects include piping techniques, plumbing code, kitchen and bathroom rough-in, fixture installation, hot water and steam heating systems and various other residential and commercial plumbing applications. Repairs, drain cleaning and trouble-shooting are essential course components.

**Length: 819 Hours (approximately 8 months)\*\***

**Tuition: \$12,950.00\***

\*Cost of Industry Exams, Certifications, books, appropriate clothing, personal tools and supplies are an additional expense to the student.

\*Federal aid and government grants available to those who qualify.

\*\*Program length does not include holidays, school closings, etc.

Students can participate in the Work-Based Activity (WBA) internship program for 192 hours of field over a eight (8) week period. Students who decide to participate may secure their own employer or receive assistance from the Job Placement Specialist. Students attend the WBA four (4) days a week and attend school one (1) day a week. Students who do not wish to participate in the WBA complete an in-class cumulative culminating project similar to the field experience.

## Cosmetology (Hybrid)

Location: Paramus Campus\*

The Cosmetology (Hybrid) program is a comprehensive 1,077-hour training course that combines online theoretical instruction with in-person hands-on practice. Students meet in-person Monday through Thursday, and remotely on Saturdays in a program that is designed to prepare them for licensure as professional cosmetologists. The hybrid format allows students to gain essential theoretical knowledge online while applying that knowledge through practical training in person. At the Paramus Campus, specialized classroom training incorporates the use of manikins, demonstrations, and live models during clinical services. The curriculum covers important topics, including professional ethics in cosmetology, chemistry related to cosmetology, anatomy, physiology, sanitation, sterilization, manicuring, pedicuring, and barbering, as well as state rules and regulations. Students enrolled in the cosmetology program have the opportunity to participate in the Work-Based Activity (WBA) internship program, which requires the completion of 192 hours of field experience over eight weeks. Students can find their own employers or seek assistance from the Job Placement Specialist. Participants will work four days a week and attend classes one day a week. For those who opt not to participate in the WBA, there is an alternative option to complete an in-class cumulative project, which will provide a similar experience to the fieldwork.

**Length: 1077 Hours (approximately 15 months)\*\***

**Tuition: \$18,000.00\***

\*Includes the Cosmetology Student Kit

\*Cost of Certifications are not included

\*Cost of textbooks are not included.

\*Federal aid and government grant available to those who qualify.

\*\*Program length does not include holidays, school closings, etc.



## Advanced Manufacturing

The Advanced Manufacturing program is designed to provide adult learners with foundational and practical skills in modern manufacturing technologies and processes. Participants will gain hands-on experience, technical knowledge, and industry-relevant competencies, preparing them for careers in high-demand manufacturing roles or helping them enhance their current skills for career advancement. This program explores the techniques and technologies used to design, produce, and optimize industrial products. It focuses on cutting-edge tools and methods that enhance production efficiency, product quality, and sustainability. Courses such as Milling 1 and Lathe 1 will require prior completion of the Fundamentals course, while the CNC CAD/CAM Introduction will require all three foundational courses. Students will have the opportunity to participate in the WBA/internship program during the final eight weeks of the program. Those who choose to participate and secure employment in a related field will attend the WBA four days a week and will attend school one day a week. Students who opt not to participate in the WBA will complete a capstone project instead.

**1,200 hours (approximately 12 months)\*\***

**Tuition: \$18,500.00\***

\*\*Cost of Certifications are not included

\*Cost of textbooks are not included.

\*Federal aid and government grant available to those who qualify.

**\*\*Program length does not include holidays, school closings, etc.**



## FULL-TIME DAY PROGRAM GENERAL INFORMATION

### Location:

Main Campus: 190 Hackensack Avenue in Hackensack.

Cosmetology (Hybrid): 275 Pascack Rd., Paramus - Room 104

Transportation is the responsibility of the student.

### Schedule:

**Electrician; Plumbing Technology/Plumber; and Heating, Air Conditioning, Ventilation and Refrigeration Maintenance Technology/Technician, Advanced Manufacturing Classes:**

Fall/Winter/Spring - Monday through Friday from 8:00 AM to 3:00 PM

Summer - Monday through Thursday from 8:00 AM to 3:00 PM

**Business Administration and Management (BAM) Hybrid:** mix of in-person and remote participation

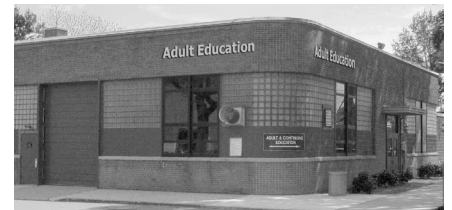
**Cosmetology (Hybrid):** In-person - Monday through Thursday from 5:00 PM to 9:00 PM; Remote - Saturday 8:00 AM to 12:00 PM

### Tuition:

We offer a monthly payment plan for our Full-time Adult program. Textbooks and costs associated with certification testing, state licensing, personal tools and appropriate clothing are not included in most courses. Self-paying, non-agency sponsored students may qualify for a 10% tuition reduction when paid in full by first week of class.

### Financial Aid:

Grants may be available from the Department of Education and the Department of Labor, with some covering most, if not all, of the tuition for qualified students. In addition, the IRS offers the Hope Scholarship tax credit. If a balance remains, then students may apply for loans and/or payment plans.



### FULL-TIME DAY PROGRAM INSTRUCTOR CREDENTIALS

We are very proud to say our instructors have years of practical experience as well as professional training and certifications in a wide range of fields. These experiences and trainings are brought to life each day and shared with our students through both academic and hands-on learning activities. Listed below are a some of the credentials our faculty hold.

#### **Daniel DeSena (Electrician)**

- New Jersey Teacher Certification, Teacher of Technical Occupations: Electrical Technology, 2004
- Licensed Electrical Contractor, New Jersey State Board of Electrical Contractors, 1996
- Credits earned in Business Management/Aviation, Private Pilot's License 1983, Daniel Webster College, Nashua, NH
- Credits earned in Aviation/General Studies, 1980, Florida Institute of Technology, Melbourne FL

#### **Gretchen Foote (Business Administration and Management)**

- BA, Bachelor of Arts, Major in School of Education, Saint Peter's University
- BA, Bachelor of Arts, Major in School of Business Administration with concentration in Criminal Justice. Saint Peter's University
- NJ Certified Teacher -Elementary Education
- Certified Long Distance Educator
- MOS Office Specialist Certified
- Quick Books Online Certified

#### **John F Gagliano (Advanced Manufacturing)**

- BFA - Product/Industrial Design, Parsons School of Design, New York, 1994
- Bergen County Vocational Technical H.S. - Commercial Art/Photography, Hackensack, New Jersey
- Design Point Solutions | Solidworks Training, Clark, New Jersey

#### **Raymond Krenc (Plumbing Technology/Plumber)**

- OSHA 30 Construction, 2024
- Licensed Black Seal, 2024
- Licensed HVACR, 2015
- Licensed Master Plumber, 2014
- Passaic County and Vocational High School Plumbing program, 1992

#### **Stephanie Leon (Cosmetology [Hybrid])**

- Cosmetology and Licensed Cosmetologist/Teacher Training Program/ Barber/Shaving Training Program, Capri Institute, 1989
- Methods of Teaching, Creative Teaching and Curriculum Strategies, Montclair State University, 2004
- OSHA 10 Certified
- NJ State Board of Cosmetology Examiner
- Clairol Professional Hair Coloring & Logics Hair Color Certified
- Barber/Shaving Course Trainer

#### **Joseph Cuomo... (Heating, Air Conditioning, Ventilation and Refrigeration Maintenance Technology/Technician)**

- NJ Master HVAC/R licensed
- Low pressure Black seal NJ licensed
- EPA Refrigerant handling licensed since 2000
- Certified Refrigerant handler and recovery of R-410a
- Automated Logic/ BMS HVAC System monitoring Training

## FULL-TIME DAY ADMISSIONS PROCESS CHECKLIST\*

Bergen County Technical Schools Adult Education & Continuing Education Full-Time Day Program accepts applications on an open- enrollment basis. However, all programs have fixed start dates and will be closed once enrollment has reached its maximum capacity. It is critical that students receive advisement prior to registering for a course.

### Procedures for Admissions

1. **Attend an Information Session:** Information sessions are scheduled in-person at 190 Hackensack Ave. Hackensack, NJ 07601 on Wednesdays at 1:00 pm, and include program/school overview, tour of shops/classrooms and an opportunity to meet instructors. Walk-ins are welcome. Contact the Admissions Office ([adultedadmissions@bergen.org](mailto:adultedadmissions@bergen.org) or 201-343-6000 X 5503) if you have any questions or concerns regarding the information session.
2. **Submit a Completed Application Form:** Complete the school's application form (can be found at <https://www.bergen.org/Page/4914> ) and return it to the admissions office. *Applications can be completed by being mailed to the institution, handed in-person, or e-mailed to the Admissions Counselor*
3. **Schedule a meeting with the Admissions Counselor:** Upon completion of the application, the admissions counselor will contact you to set up a meeting to complete your application, go over other necessary documentation required and next steps.  
The following will be required to enroll:
  - a. **High School Diploma or GED/HSE equivalency** (*A college diploma, or 30 credits, from an institution in the U.S can be used in lieu of a high school diploma*)
  - b. **Mantoux (TB) results** from a doctor or local health department
  - c. **Test of Adult Basic Education (TABE) test results** if applicable (*\*Please note that a high school or HSE diploma outside of New Jersey, or a diploma issued in New Jersey prior to 2004, will require the prospective student to sit for a TABE exam*)
  - d. **\$100 non-refundable tuition deposit** (cash, check, money order and Visa or Mastercard is accepted)
4. **Schedule an appointment with the Financial Aid Office:** A meeting with the Financial Aid Officer is necessary for all students enrolling in a program more than 600 hours. The Financial Aid Officer will reach out to you once your application is fully completed to schedule the appointment.  
Prior to meeting with the Financial Aid Officer:
  - a) **Prepare Documentation:** To complete the FAFSA form, obtain the form labeled "Before Beginning a FAFSA-Documents Needed" from the admissions office
  - b) **Complete FAFSA Worksheet:** FAFSA worksheet can be obtained online at [studentaid.gov](http://studentaid.gov) or upon enrolling at BCTS
5. **Attend your scheduled orientation:** An orientation will be scheduled prior to the start of class at the Adult Education building. Students will be able to purchase books, complete necessary documentation and learn about rules and expectations.

\* If you are enrolling in school through a Government Agency, approval for school funding is required from the Agency's Counselor.



# High School Equivalency Testing/GED

## WHO IS ELIGIBLE FOR THE TESTS?

- YOU MUST BE A NEW JERSEY RESIDENT
- HAVE NOT GRADUATED FROM AN ACCREDITED HIGH SCHOOL or received an HSE certificate or diploma
- MUST BE AT LEAST 16 YEARS OLD AND OFFICIALLY WITHDRAWN FROM SCHOOL  
(Anyone 16 or 17 years old must complete a Certificate of Consent to Participate, verifying that yo are not enrolled in school, and signed by applicant and a parent/legal guardian before the chief examiner at the test center or have the consent form notarized by a New Jersey notary. The parent must accompany the applicant with their ID-must match same last name and show applicant's Birth Certificate. If legal guardian must show ID and bring the court documents awarding guardianship).

## HOW TO REGISTER FOR THE HSE TEST:

- Create a GED student account online at [www.ged.com](http://www.ged.com)
- Call us to make an appointment to register at our Test Center
- You **must** be registered at our testing center before a test will be administered

## WHAT YOU WILL NEED:

- ORIGINAL PHOTO ID (The ID must have the candidate's name, signature, photo, and date of birth, and applicant must be at least 16 years old)
- PROOF OF NEW JERSEY RESIDENCY
- SOCIAL SECURITY CARD (optional)
- PAYMENT FOR THE INITIAL TEST (\$144/All 4 subjects) payable Online to GED by Debit/Credit Card)

Office Location: 190 Hackensack Avenue,  
Hackensack, NJ 07601, Room 119

Office Hours: Monday through Friday, 9:00 am – 2:00 pm

**REGISTRATION BY APPOINTMENT ONLY - CALL 201-343-6000 EXT. 2308**

TESTS OFFERED: ON COMPUTER BASED – ENGLISH AND SPANISH TESTS AVAILABLE  
WHEELCHAIR ACCESSIBLE

## ADMINISTRATION

### Board of Education

William Connolly, *President*  
Jacqueline Gadaleta, *Vice President*  
Patrick Fletcher, *Executive County Superintendent*  
Jason Kim  
Lawrence Meyerson, Ph.D

### Administration

Howard Lerner, Ed.D., *Superintendent*  
Andrea Sheridan, *Assistant Superintendent*  
Richard Panicucci, *Assistant Superintendent for Curriculum and Instruction*  
John Susino, *Business Administrator / Board Secretary*

### Building Administration

Victor Lynch, *Principal*  
Nancy Joa, PhD., *Lead Teacher, Curriculum/Instruction*

### Bergen County Executive

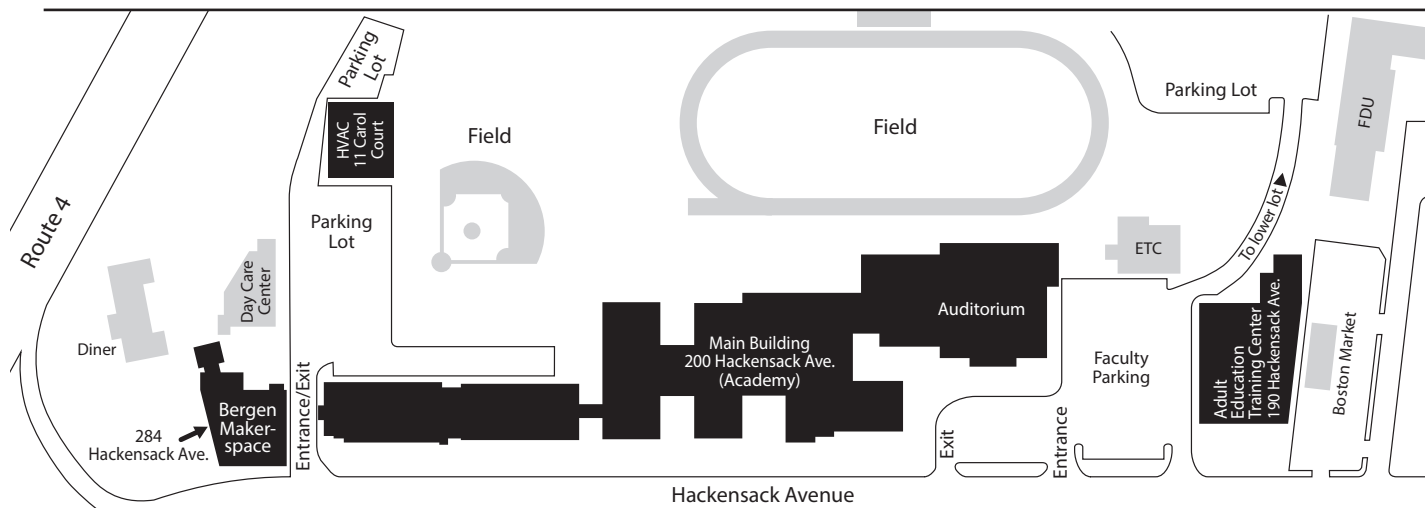
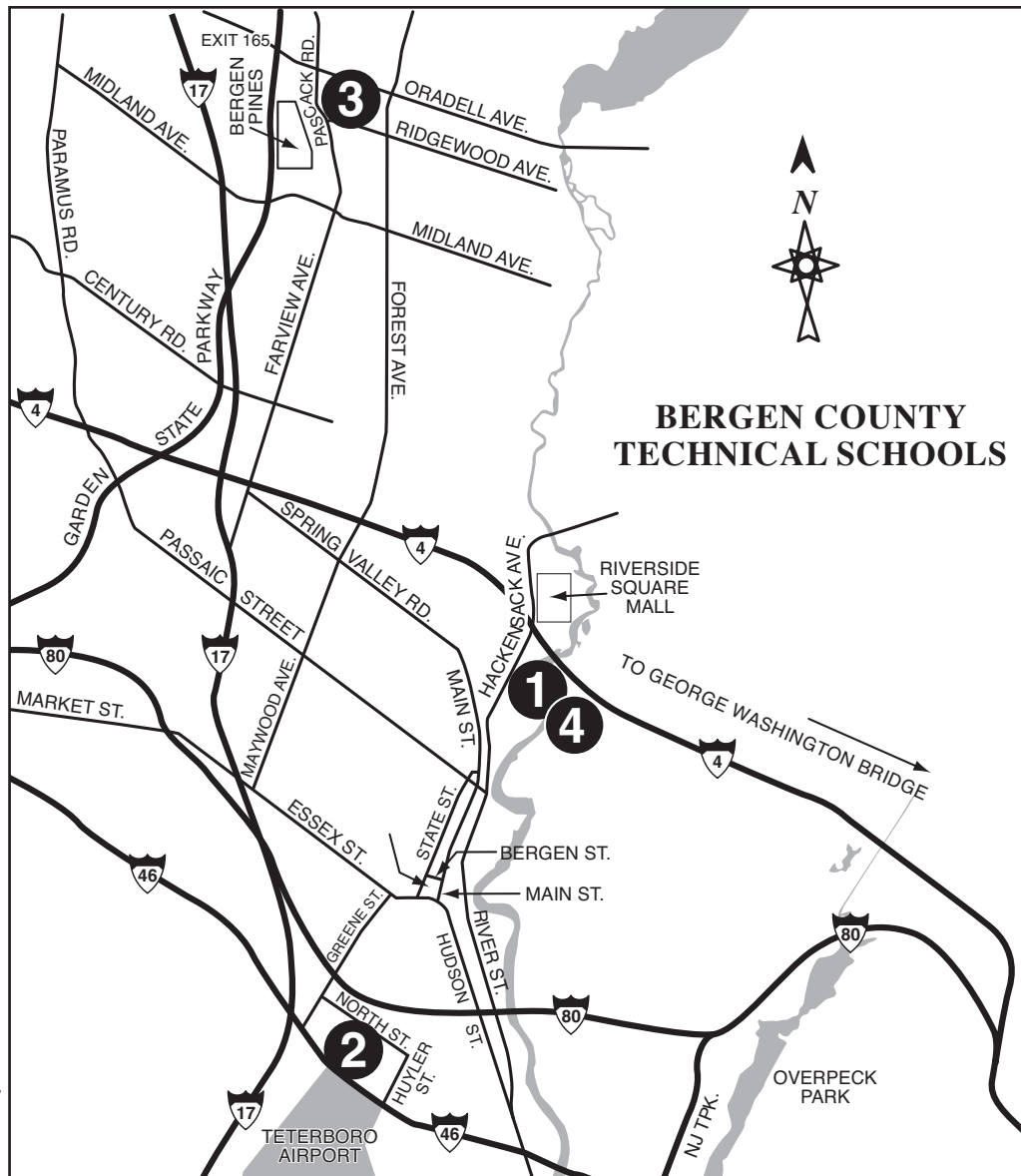
James J. Tedesco III

### Bergen County Commissioners

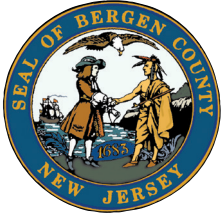
Mary J. Amoroso, *Chairwoman*  
Steven A. Tanelli, *Vice Chairman*  
Dr. Joan M. Voss, *Chair Pro Tempore*  
Rafael Marte  
Germaine M. Ortiz  
Thomas J. Sullivan  
Tracy S. Zur

**CAMPUS LOCATIONS/  
TRAVEL DIRECTIONS**

- 1 Hackensack Campus (190 Hackensack Avenue, and 11 Carol Court, Hackensack):** Route 4 East to Hackensack Avenue South. The campus is located directly south of Route 4 on Hackensack Avenue. **11 Carol Court** is on the north side of the main building (the side closer to Route 4)
- 2 Teterboro Campus (504 Route 46 West & Central Avenue, Teterboro):** Route 46 toward Teterboro Airport. The campus is located directly across the airport on Route 46 West.
- 3 Paramus Campus (275 Pascack Road, Paramus):** Ridgewood Avenue to Pascack Road. The campus is located on Pascack Road, directly across from Bergen New Bridge Medical Center.
- 4 Bergen Maker Space (284 Hackensack Avenue):** Route 4 East to Hackensack Avenue South. The building is located directly south of Route 4 on Hackensack Avenue at the north side of the high school campus.



**HACKENSACK CAMPUS**



## BERGEN COUNTY TECHNICAL SCHOOLS

190 HACKENSACK AVE.  
ADULT EDUCATION BUILDING  
HACKENSACK, NJ 07601-6637

Non-Profit Organization  
U.S. Postage

**PAID**

Permit No. 69  
Hackensack, NJ 07601

**FOLLOW US ON SOCIAL MEDIA**

**@BCTSAAdultEd**



### Part-Time Evening Courses

- Apprenticeship Training
- Carpentry
- Collision Repair
- Computer Training
- Electrical Technology
- Firemen-Stationary Engineering (Black Seal/Blue Seal)
- Home Inspection Program
- HVAC
- Makerspace
- Plumbing
- Programmable Controls
- Water & Wastewater Operations
- Welding
- And More...

**We also offer these additional services to give you some of the best training in the area:**

- Full-Time Day Program
- Customized Training Services

## Bergen County Technical Schools Get The Competitive Edge!

201.343.6000 ext. 2289 (Evening Vocational Classes), 2288 (Day Classes),  
5503 (Admissions Counselor),  
2308 (HSE [GED] Testing),  
4603 (Apprenticeship Coordinator)

[www.bergen.org/AdultEd](http://www.bergen.org/AdultEd)

